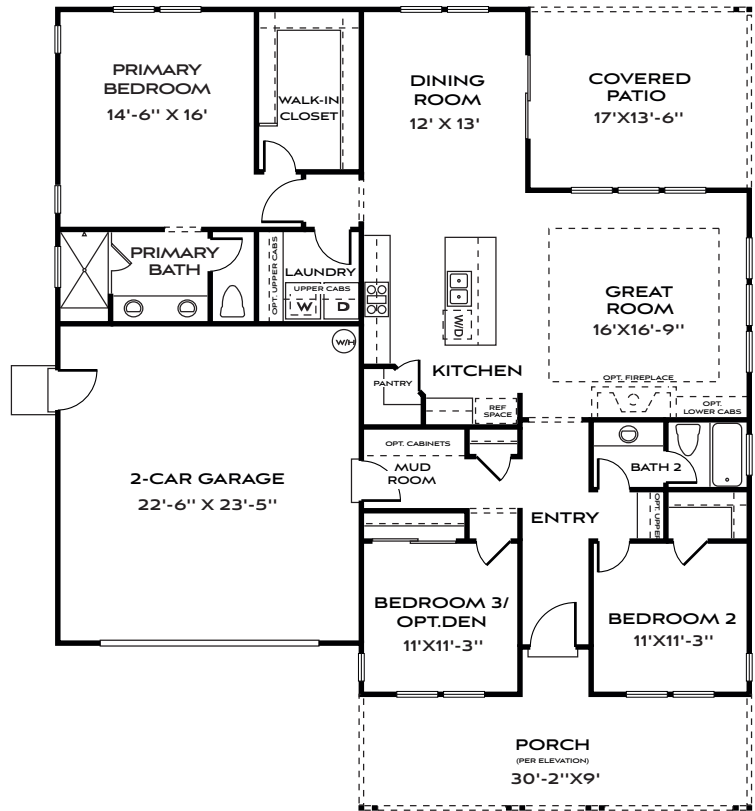
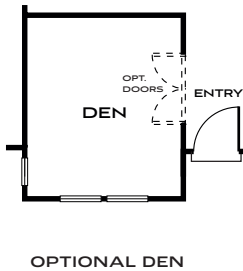
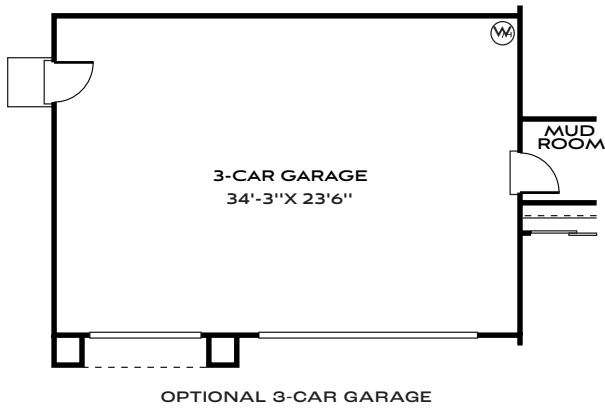


# PLAN

# 1



1,813 square feet | Single Story  
Three Bedrooms | Two Baths | Two Car Garage  
Options: Den | Three Car Garage



MOUNTAIN RUSTIC (FEATURING 3 CAR GARAGE OPTION)



FARMHOUSE

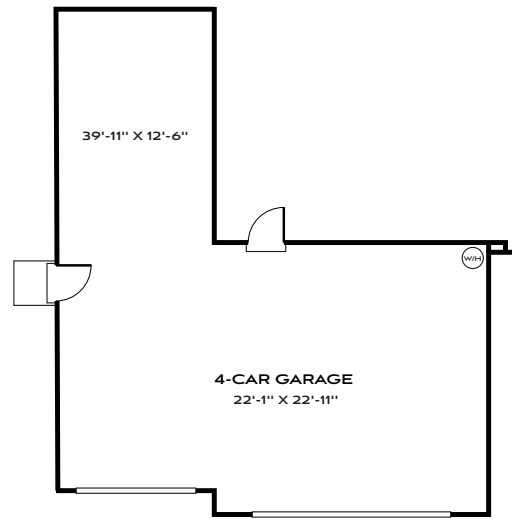
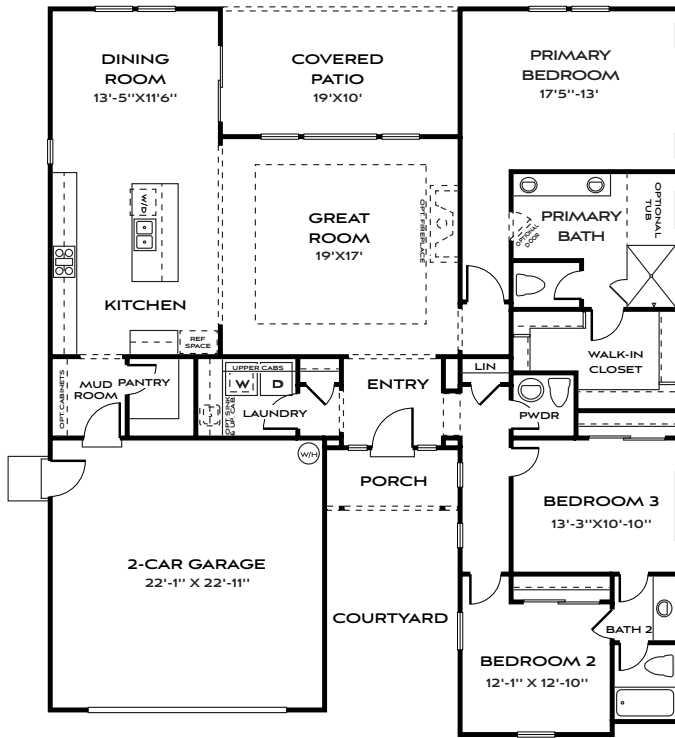


MODERN

# PLAN



2,105 square feet | Single Story  
Three Bedrooms | Two and a Half Baths | Two Car Garage  
Options: Four Car Garage



OPTIONAL 4-CAR GARAGE

FARMHOUSE (FEATURING 4 CAR GARAGE OPTION)



MOUNTAIN RUSTIC



MODERN

# PLAN

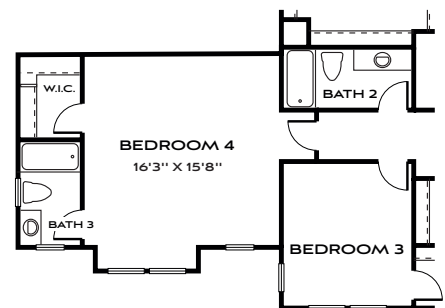
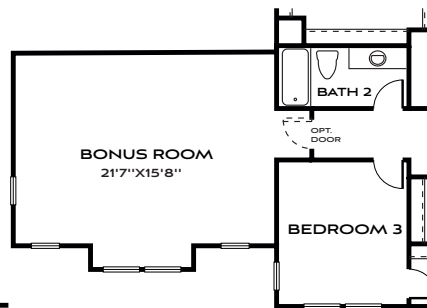
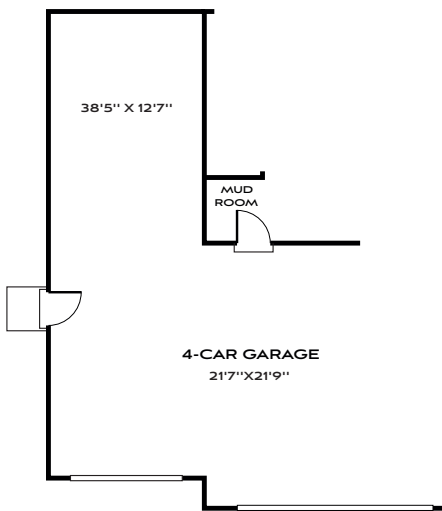
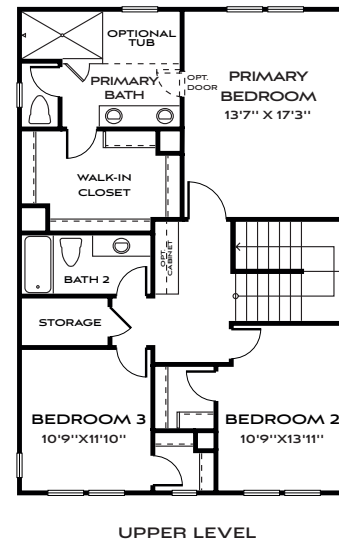
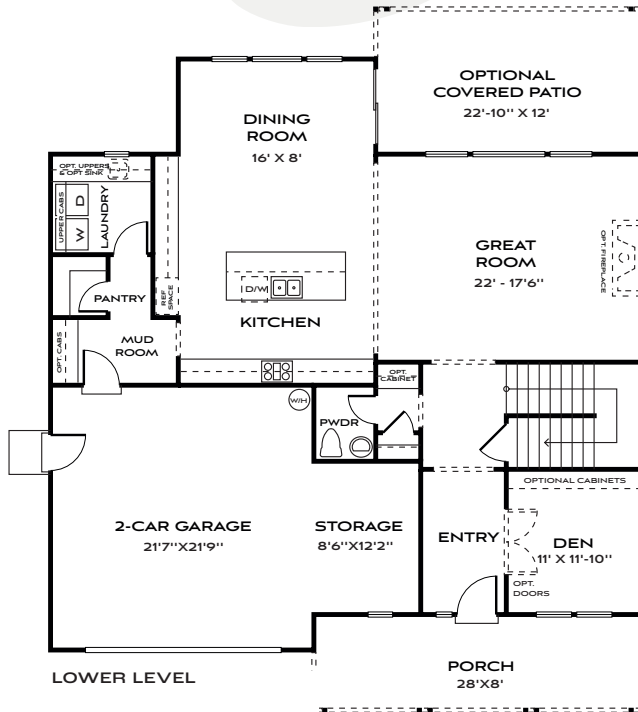


BATES HOMES  
PATTERSON FARMS

2,607 - 2,990 square feet | Two Story

Three Bedrooms | Den | Two and a Half Baths | Two Car Garage + Storage

Options: Bedroom 4 + Bath 3 | Bonus Room | Covered Patio  
Four Car Garage



**MOUNTAIN RUSTIC**



**MODERN**  
(FEATURING BONUS ROOM AND  
4 CAR GARAGE OPTIONS)



**FARMHOUSE**  
(FEATURING BONUS ROOM OPTION)



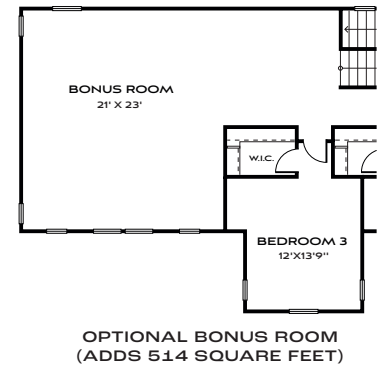
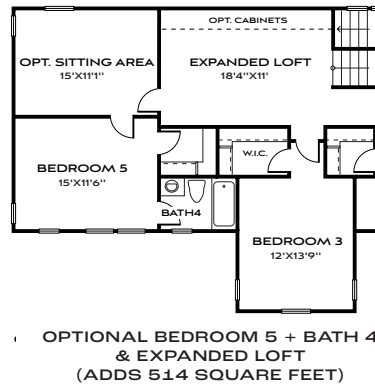
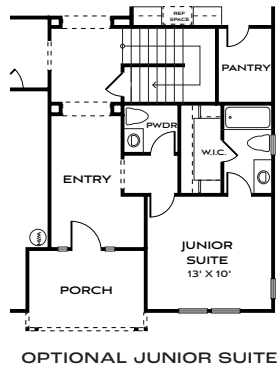
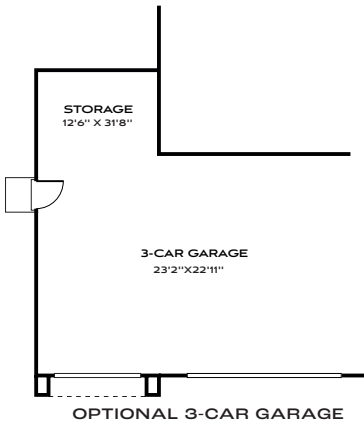
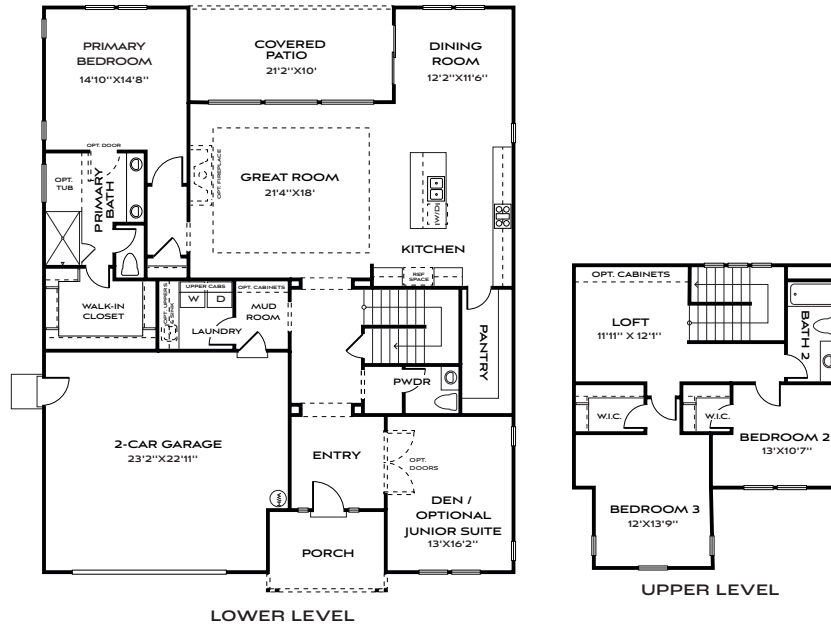
# PLAN



2,828 - 3,342 square feet | Two-Story

Three Bedrooms | Den | Loft | Two and a Half Baths | Two Car Garage

Options: Bonus Room | Bedroom 5 + Bath 4 and Expanded Loft | Junior Suite  
Three Car Garage



**MODERN (FEATURING BONUS ROOM OPTION)**



**MOUNTAIN RUSTIC**



**FARMHOUSE**  
(FEATURING BONUS ROOM AND  
3 CAR GARAGE OPTIONS)



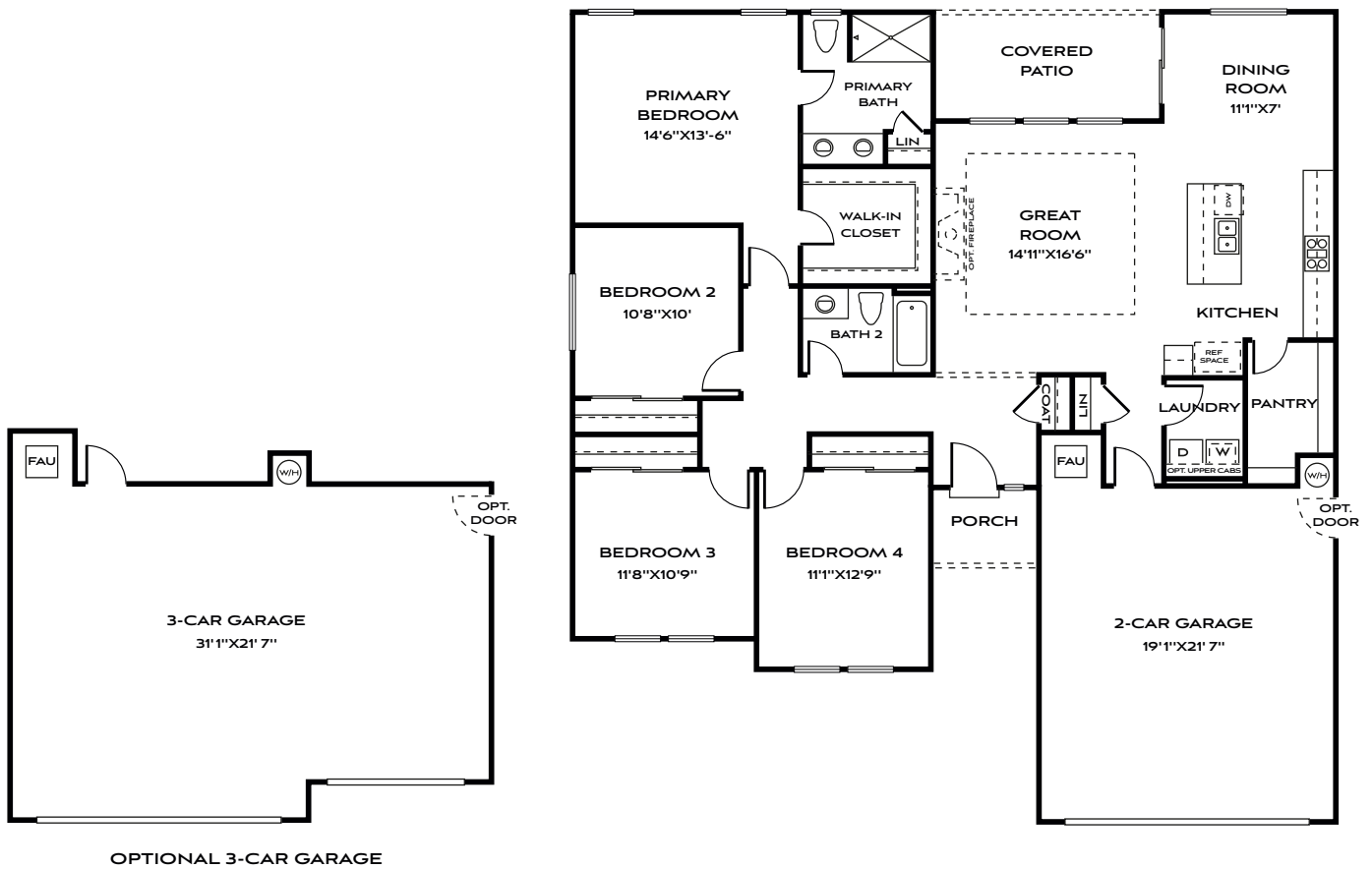
# PLAN

PRELIMINARY



BATES HOMES  
PATTERSON FARMS

1,735 square feet | Single-Story  
Four Bedrooms | Two Baths | Two Car Garage  
Options: Three Car Garage





**MODERN** (FEATURING 3 CAR GARAGE OPTION)



**FARMHOUSE**  
(FEATURING 3 CAR GARAGE OPTION)



**MOUNTAIN RUSTIC**  
(FEATURING 3 CAR GARAGE OPTION)



Prices, plans and terms are subject to change without prior notice. Square footage is approximate and will vary from final construction. Any floorplans, elevations and photos are artist conceptions only and are not intended to show specific detailing that may or may not be available. © Bates Homes All Rights Reserved. Marketed by Kristen Noel RE Brokerage 03.02.26

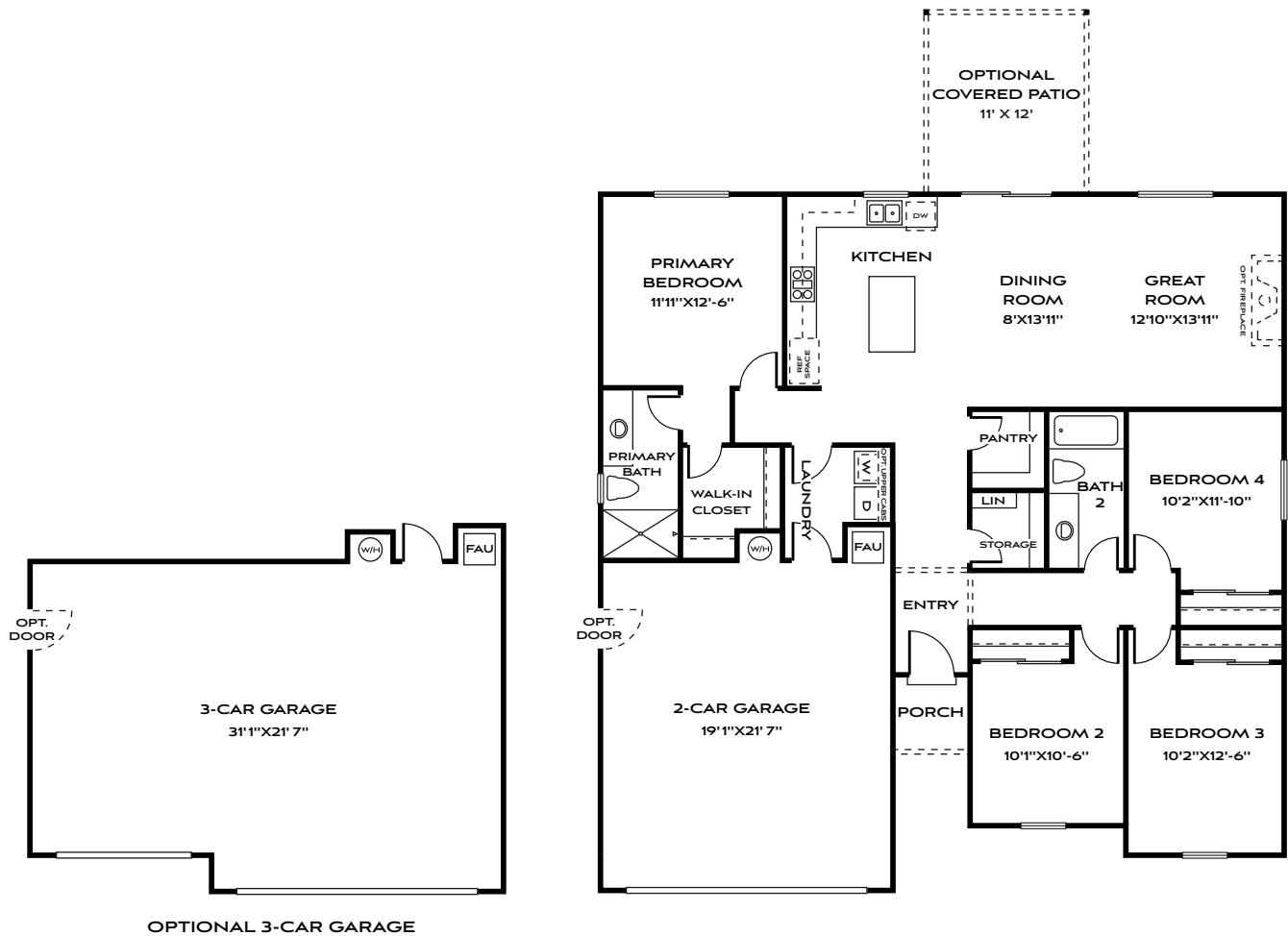
# PLAN

PRELIMINARY



BATES HOMES  
PATTERSON FARMS

1,578 square feet | Single-Story  
Four Bedrooms | Two Baths | Two Car Garage  
Options: Covered Patio | Three Car Garage



**MOUNTAIN RUSTIC** (FEATURING 3 CAR GARAGE OPTION)



**MODERN**  
(FEATURING 3 CAR GARAGE OPTION)



**FARMHOUSE**  
(FEATURING 3 CAR GARAGE OPTION)



# PLAN

PRELIMINARY

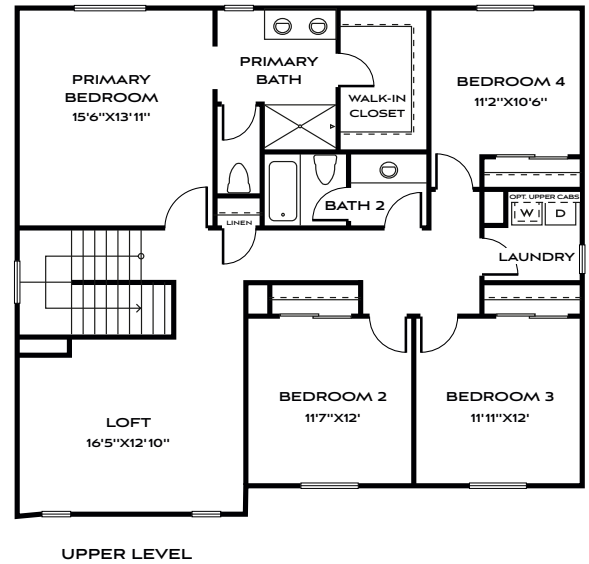
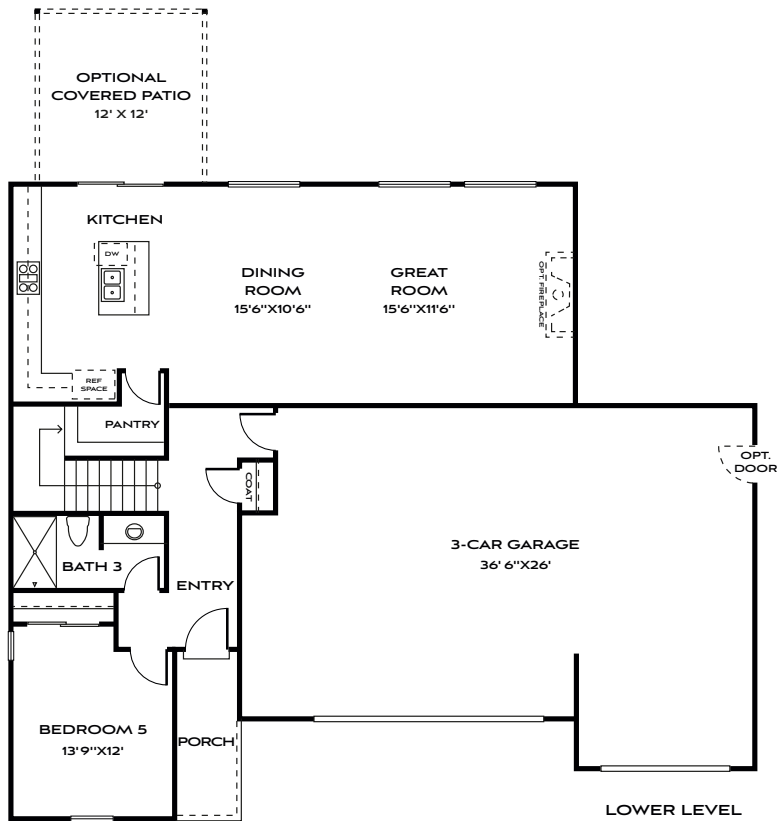


BATES HOMES  
PATTERSON FARMS

2,425 square feet | Single-Story

Five Bedrooms | Loft | Three Baths | Three Car Garage

Options: Covered Patio





FARMHOUSE



MOUNTAIN RUSTIC



MODERN