

BELGRADE, MT

-BIG SKY-

BIG *Life*

Call Montana Home



PRESCOTT RANCH ^{MT}



APPALOOSA PLAN 1

SCAN FOR DETAILS

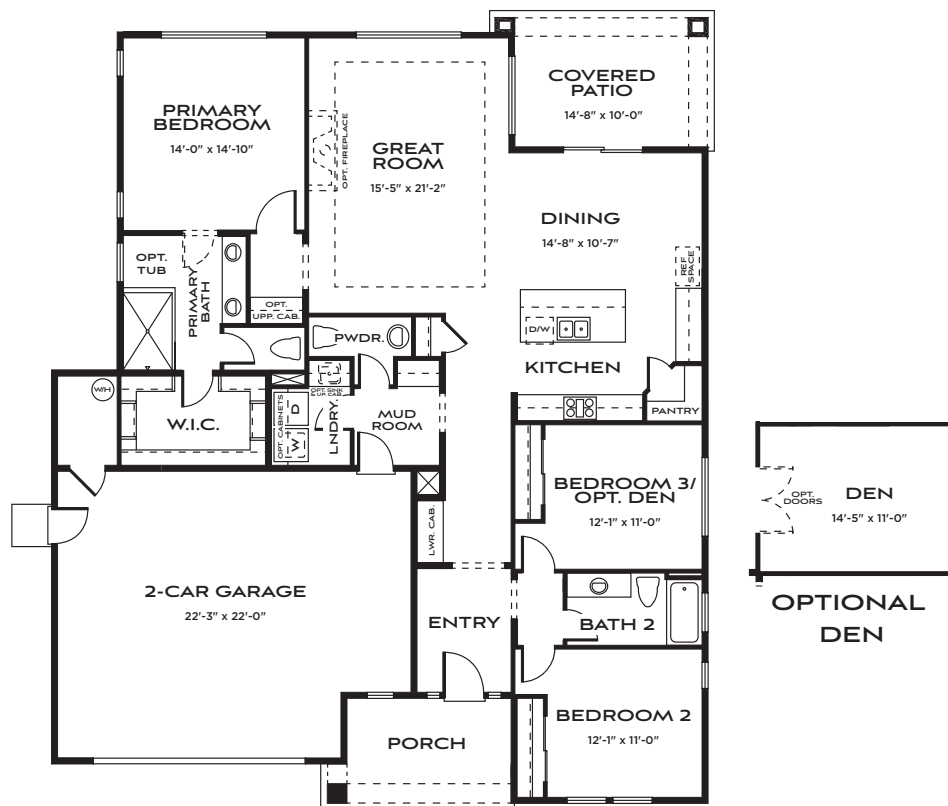


1,927 square feet | Single Story

2 - 3 Bedrooms | 2.5 Baths | 2 Car Garage

Options: Den | Tub at Primary Bathroom | Fireplace

Your new home should be exactly that: homey. When you live in this ideal home, you'll feel that sense of warmth from the moment you cross the threshold. The spacious, open floor plan offers plenty of natural light and a covered patio for enjoying the outdoors in style. In this home, you can truly unwind and relax after a long day.



FARMHOUSE (A)



CRAFTSMAN (B)



TRADITIONAL (C)

(406) 551-9656 | PrescottRanch@BatesHomes.com | BatesHomes.com



APPALOOSA PLAN 2

SCAN FOR DETAILS

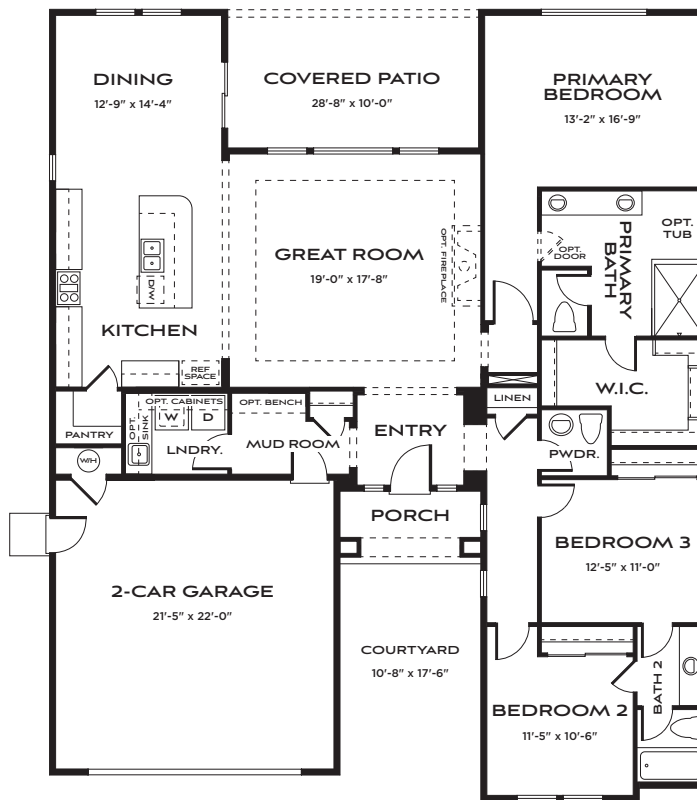


2,009 square feet | Single Story

3 Bedrooms | 2.5 Baths | 2 Car Garage

Options: Tub at Primary Bathroom | Fireplace

Plan 2 celebrates the art of living well. With over 2,000 square feet of open, flowing space, every moment feels elevated—from gathering in the kitchen and great room to enjoying golden evenings on the covered patio. The ease of single-story living ensures beauty and accessibility at every turn, creating a sanctuary where entertaining is effortless, and life's most meaningful moments unfold with grace.



FARMHOUSE (A)



CRAFTSMAN (B)



TRADITIONAL (C)

(406) 551-9656 | PrescottRanch@BatesHomes.com | BatesHomes.com



APPALOOSA PLAN 4

SCAN FOR DETAILS

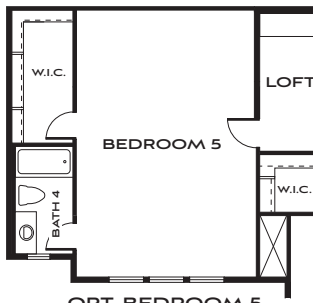


2,771 - 3,308 square feet | Two Story

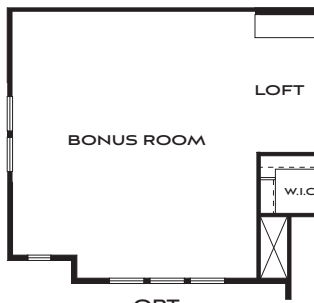
3 - 5 Bedrooms | 2.5 - 4.5 Baths | 2 Car Garage

Options: Bonus Room | Bedroom 4/Bath 3 | Tub at Primary Bathroom | Fireplace

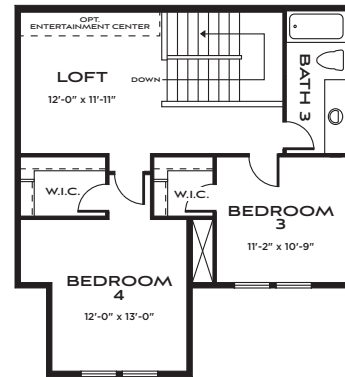
From the moment you set foot in this home, you can tell it is brimming with sophistication and elegance. A beautiful entry hallway leads into an open floor plan downstairs, offering easy access to the great room, kitchen, dining room, and outdoor covered patio. This airy space is filled with natural light and a great "flow" that's ideal for entertaining.



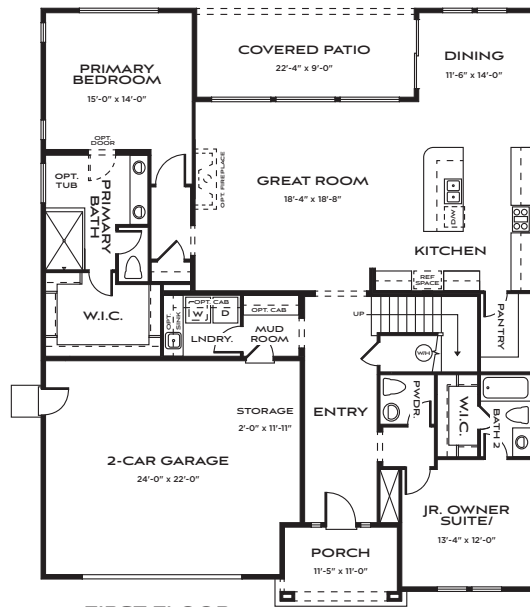
OPT. BEDROOM 5
W/ BATH 4
(ADDS 472 SQ. FT.)



OPT.
BONUS ROOM
(ADDS 472 SQ. FT.)



SECOND FLOOR



FIRST FLOOR



FARMHOUSE (A)



CRAFTSMAN (B)



TRADITIONAL (C)

(406) 551-9656 | PrescottRanch@BatesHomes.com | BatesHomes.com



APPALOOSA PLAN 5

SCAN FOR DETAILS

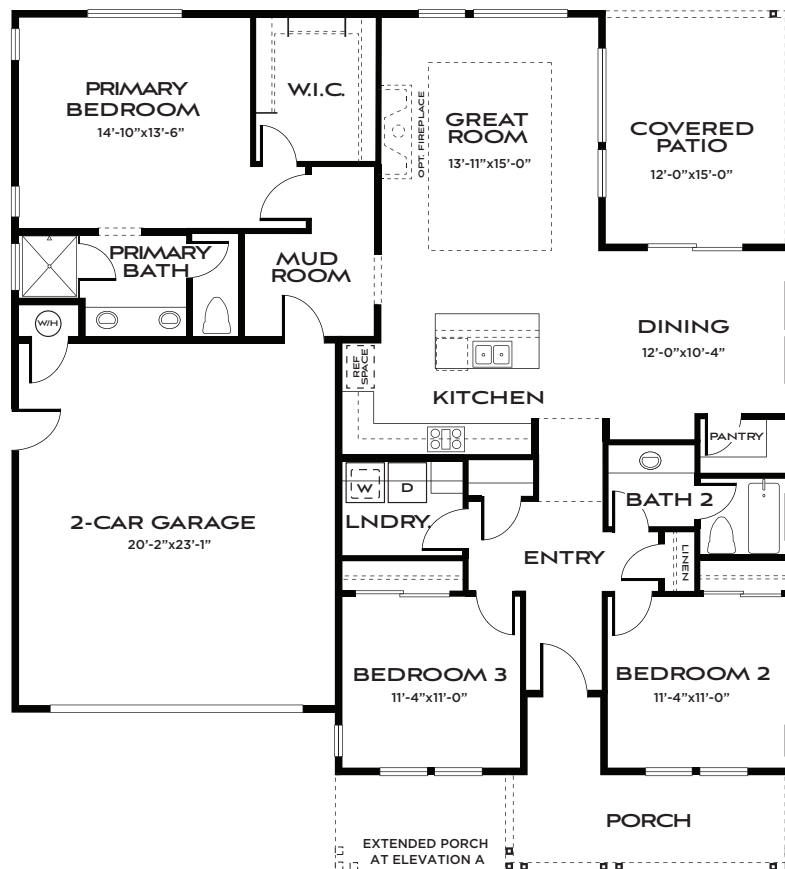


1,655 square feet | Single Story

2 - 3 Bedrooms | 2 Baths | 2 Car Garage

Options: Fireplace

Smart, stylish, and thoughtfully designed, this single-story home lives larger than its square footage suggests. An open-concept layout connects the great room, dining area, and kitchen—flooded with natural light and perfect for everyday living or entertaining.



FARMHOUSE (A)



CRAFTSMAN (B)



TRADITIONAL (C)

(406) 551-9656 | PrescottRanch@BatesHomes.com | BatesHomes.com



APPALOOSA PLAN 6

SCAN FOR DETAILS

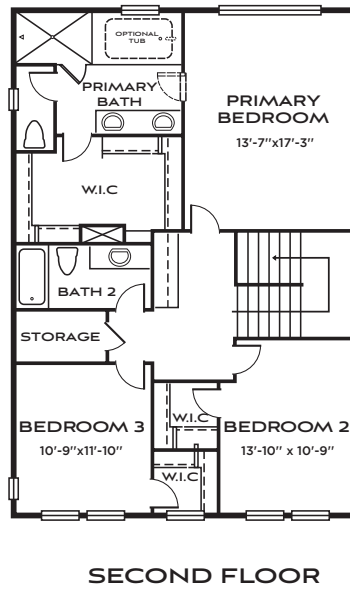
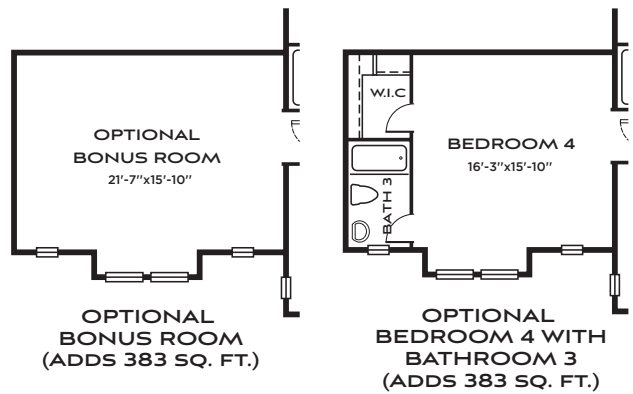
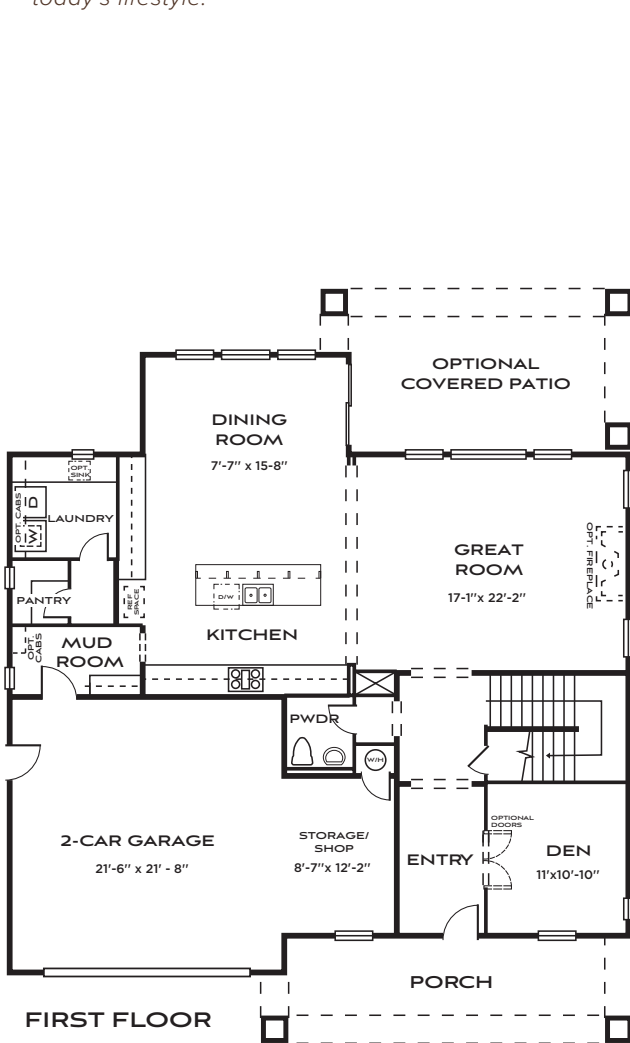


2,607 - 2,990 square feet | Two Story

3 - 4 Bedrooms | 2.5 - 3.5 Baths | 2 Car Garage + Storage

Options: Bonus Room | Bedroom 4/Bath 3 | Tub at Primary Bathroom | Fireplace | Covered Patio

This beautifully designed home offers all the space you need to live, work, and unwind in style. With three spacious bedrooms, a versatile bonus room, and an open-concept living area filled with natural light, it's thoughtfully crafted for today's lifestyle.



FARMHOUSE (A)



CRAFTSMAN (B)



TRADITIONAL (C)

(406) 551-9656 | PrescottRanch@BatesHomes.com | BatesHomes.com



PRESCOTT RANCH ^{MT}

Living Redefined

NESTLED IN BELGRADE, JUST MINUTES FROM BOZEMAN, Prescott Ranch provides easy access to Montana's natural beauty and urban conveniences. Enjoy proximity to top-rated schools, shopping centers, and recreational areas, all while savoring the tranquility of a close-knit neighborhood.



BUILT-IN QUALITY *you can feel*

At Prescott Ranch, value goes beyond the price tag, it's built into every corner of your home. Each residence showcases Bates Homes' Signature Style Features, a curated collection of designer finishes, innovative layouts, and smart construction details that come standard

Exceptional Features Included in Every Home:

- Choose from 3 distinct home series and 13 thoughtfully crafted floorplans
- Variety of architectural styles, room options, and flexible spaces to fit every lifestyle
- Fully landscaped front and back yards with irrigation and drip systems
- Full perimeter wood fencing for privacy and security
- 9-10' ceilings (per plan), 8' entry doors, and 3-panel interior doors
- Energy-efficient air conditioning system (opt. heat recovery ventilator (HRV))
- Radon mitigation fan for added safety
- High-speed fiber optic internet hookup capabilities
- Abundance of natural light with 2x more windows than the average new home
- Peace-of-mind with a comprehensive 1-Year Builder Warranty



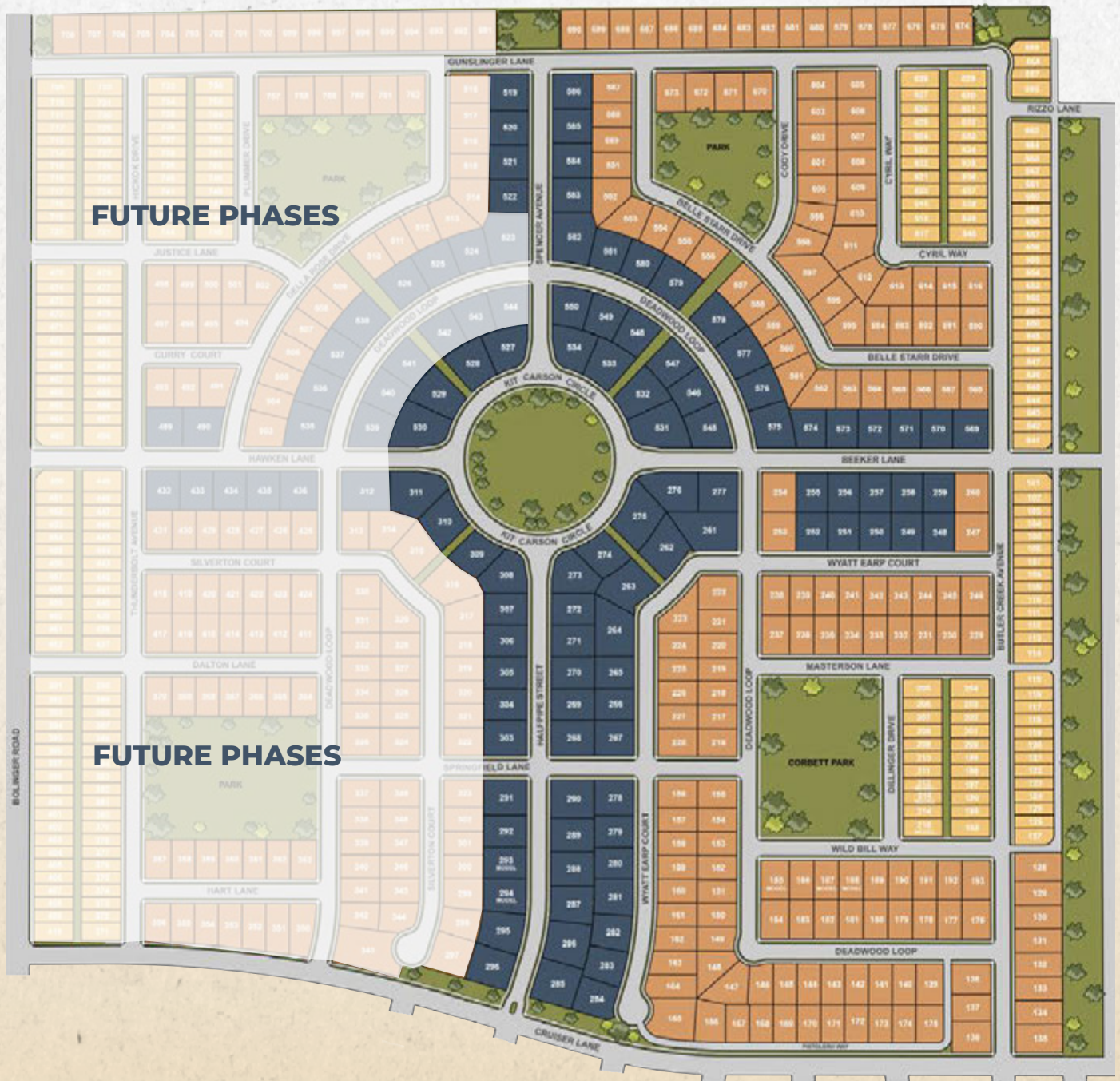
WHY WE *love it here*

Location That Works for You

- Just minutes from Bozeman—shopping, dining, healthcare, world-class recreation, and Montana State University
- Convenient access to I-90, the Bozeman Yellowstone Airport, and regional travel routes
- A master planned community setting with five neighborhood parks
- Walk or bike to nearby Belgrade schools—from elementary through high school

Outdoor Living at Its Best

- Explore the Bridger Mountains, Yellowstone National Park, Blue Ribbon Trout Streams, and Big Sky just a short drive away
- Enjoy skiing, hiking, fishing, and biking—adventure for every season and skill level
- Stunning natural landscapes and wide-open skies make every day feel like a getaway





PRESCOTT RANCH^{MT}

CREATING PLACES *you will love*

At its core, it seems simple: curating and building homes for comfort and livability. Behind the scenes? It's so much more.

At Bates Homes, an interconnected network of intelligent, creative minds are always hard at work refining distinct architectural aesthetics, leading the best in modern design, and planning unparalleled neighborhoods.

The result: inspired homes that represent time-honored craftsmanship, attention to detail, and contemporary style, in breathtaking locales.

(406) 551-9656

prescottranch@bateshomes.com

SALES OFFICE & MODELS

805 Halfpipe Street
Belgrade, MT 59714

BATESHOMES.COM



**VIEW THE HOMES &
COMMUNITY ONLINE**

Prices, plans and terms are subject to change without prior notice. Square footage is approximate and will vary from final construction. Any floorplans, elevations and photos are artist conceptions only and are not intended to show specific detailing that may or may not be available. © Bates Homes All Rights Reserved. 08.20.25

