



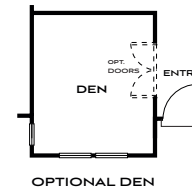
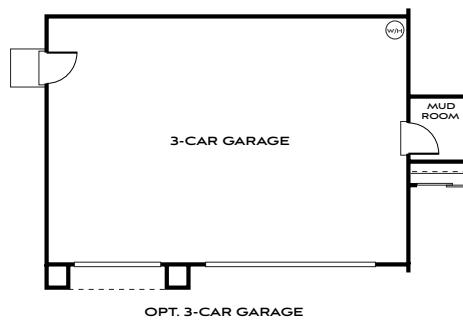
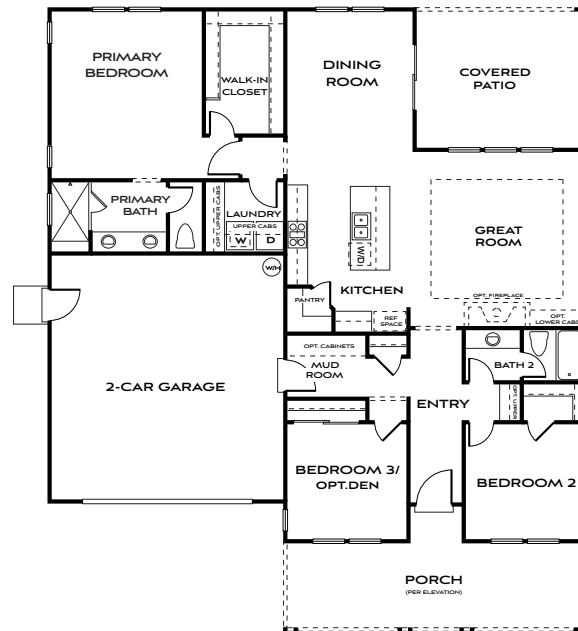
— BATES HOMES —
PATTERSON FARMS

Plan 1

1,813 square feet | Single Story

Three Bedrooms | Two Baths | Two Car Garage

Options: Den | Three Car Garage





Mountain Rustic
(featuring 3 car garage option)



Farmhouse



Modern

PRELIMINARY
Renderings are artist conception.

Prices, plans and terms are subject to change without prior notice. Square footage is approximate and will vary from final construction. Any floorplans, elevations and photos are artist conceptions only and are not intended to show specific detailing that may or may not be available. © Bates Homes All Rights Reserved. 11.19.24

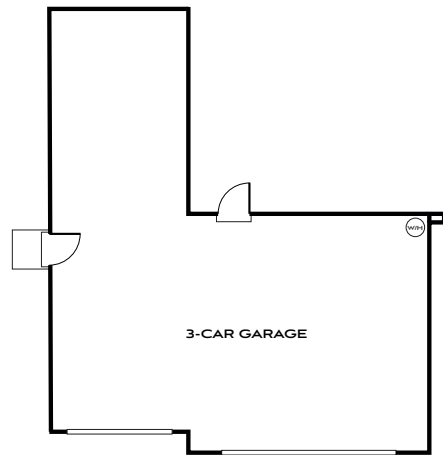
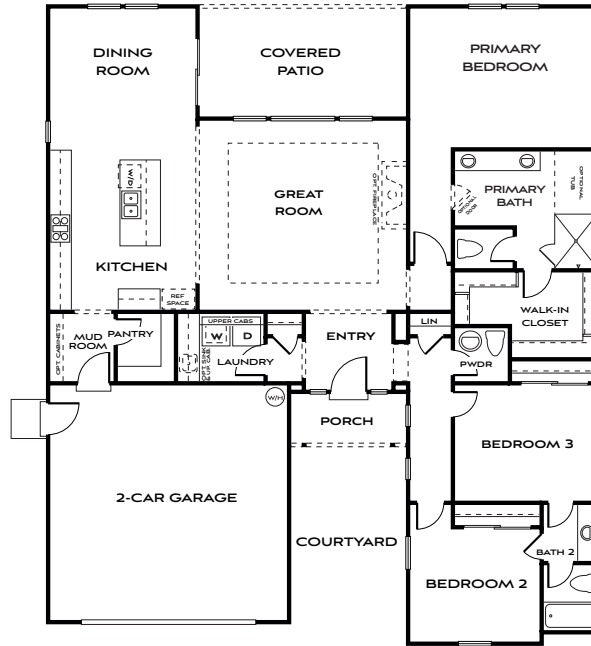


Plan 2

2,105 square feet | Single Story

Three Bedrooms | Two and a Half Baths | Two Car Garage

Options: Three Car Garage | Tub at Owners Bath



OPTIONAL 3-CAR GARAGE





Farmhouse
(featuring 3 car garage option)



Mountain Rustic



Modern

PRELIMINARY
Renderings are artist conception.

Prices, plans and terms are subject to change without prior notice. Square footage is approximate and will vary from final construction. Any floorplans, elevations and photos are artist conceptions only and are not intended to show specific detailing that may or may not be available. © Bates Homes All Rights Reserved. 11.19.24



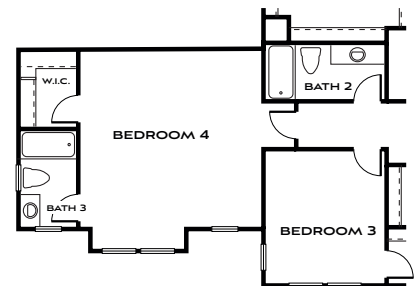
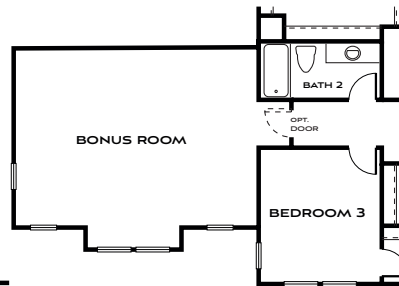
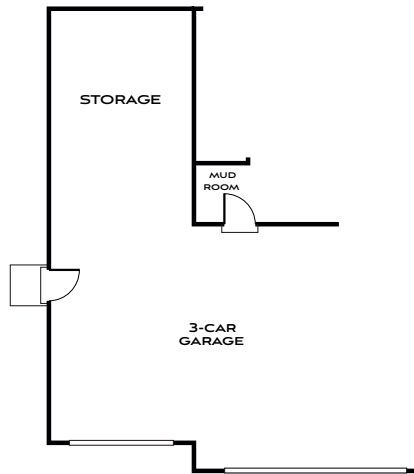
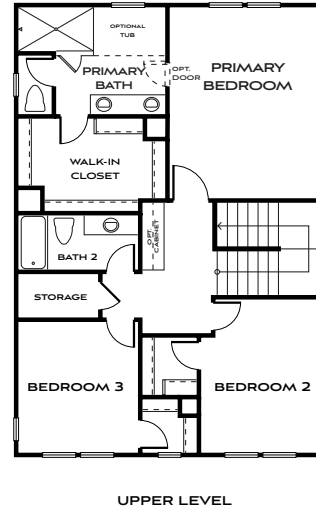
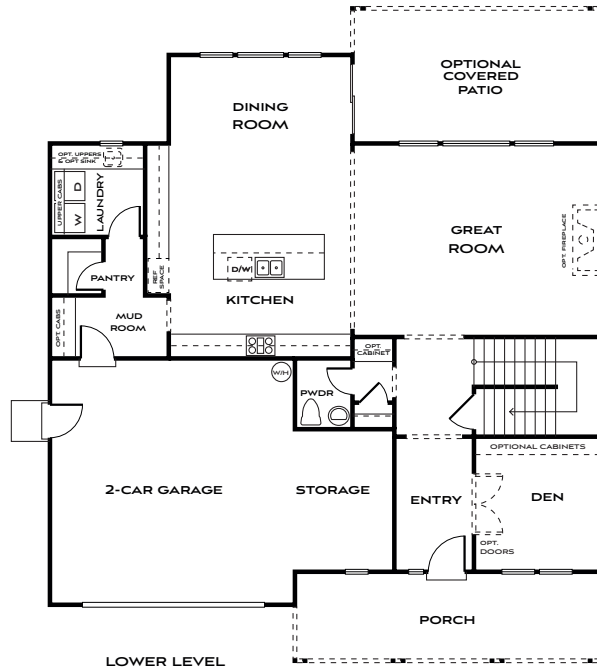
Plan 3

2,607 - 2,990 square feet | Two Story

Three Bedrooms | Den | Two and a Half Baths | Two Car Garage + Storage

Options: Bedroom 4/Bath 3 | Bonus Room | Tub at Owners Bath

Covered Patio | Three Car Garage + Storage





Mountain Rustic



Farmhouse
(featuring bonus room option)



Modern
(featuring bonus room
and 3 car garage options)

PRELIMINARY
Renderings are artist conception.

Prices, plans and terms are subject to change without prior notice. Square footage is approximate and will vary from final construction. Any floorplans, elevations and photos are artist conceptions only and are not intended to show specific detailing that may or may not be available. © Bates Homes All Rights Reserved. 11.19.24

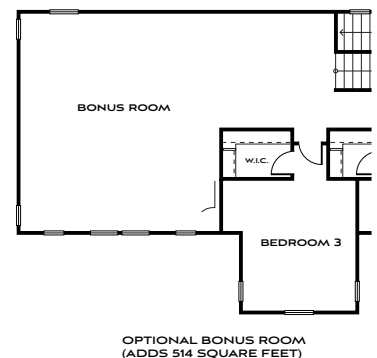
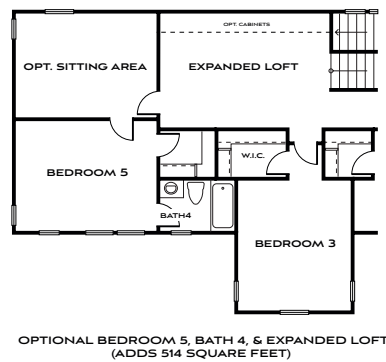
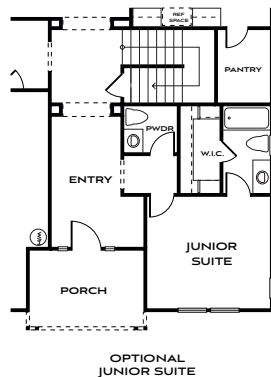
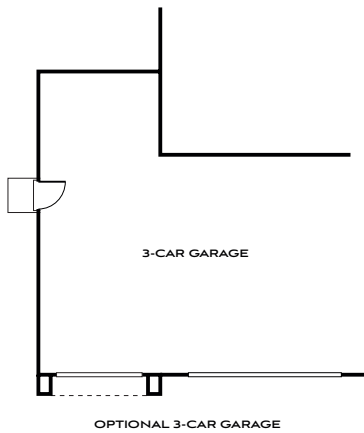
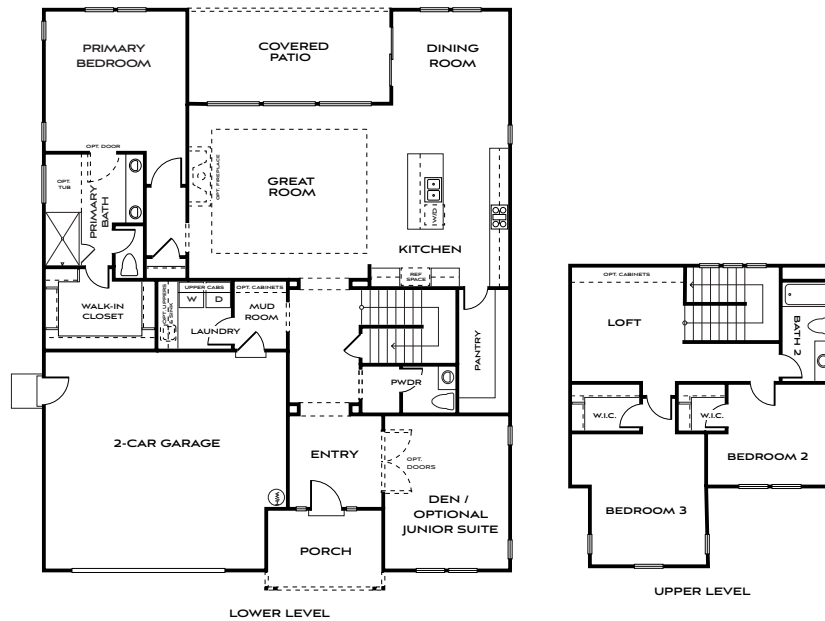


Plan 4

2,828 - 3,342 square feet | Two Story

Three Bedrooms | Den | Loft | Two and a Half Baths | Three Car Garage

Options: Bonus Room | Bedroom 5 / Bath 4 and Expanded Loft | Junior Suite | Tub at Owners Bath





Modern
(featuring bonus room option)



Farmhouse
(featuring bonus room
and 3 car garage options)

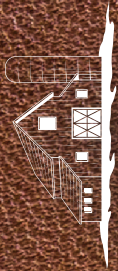


Mountain Rustic

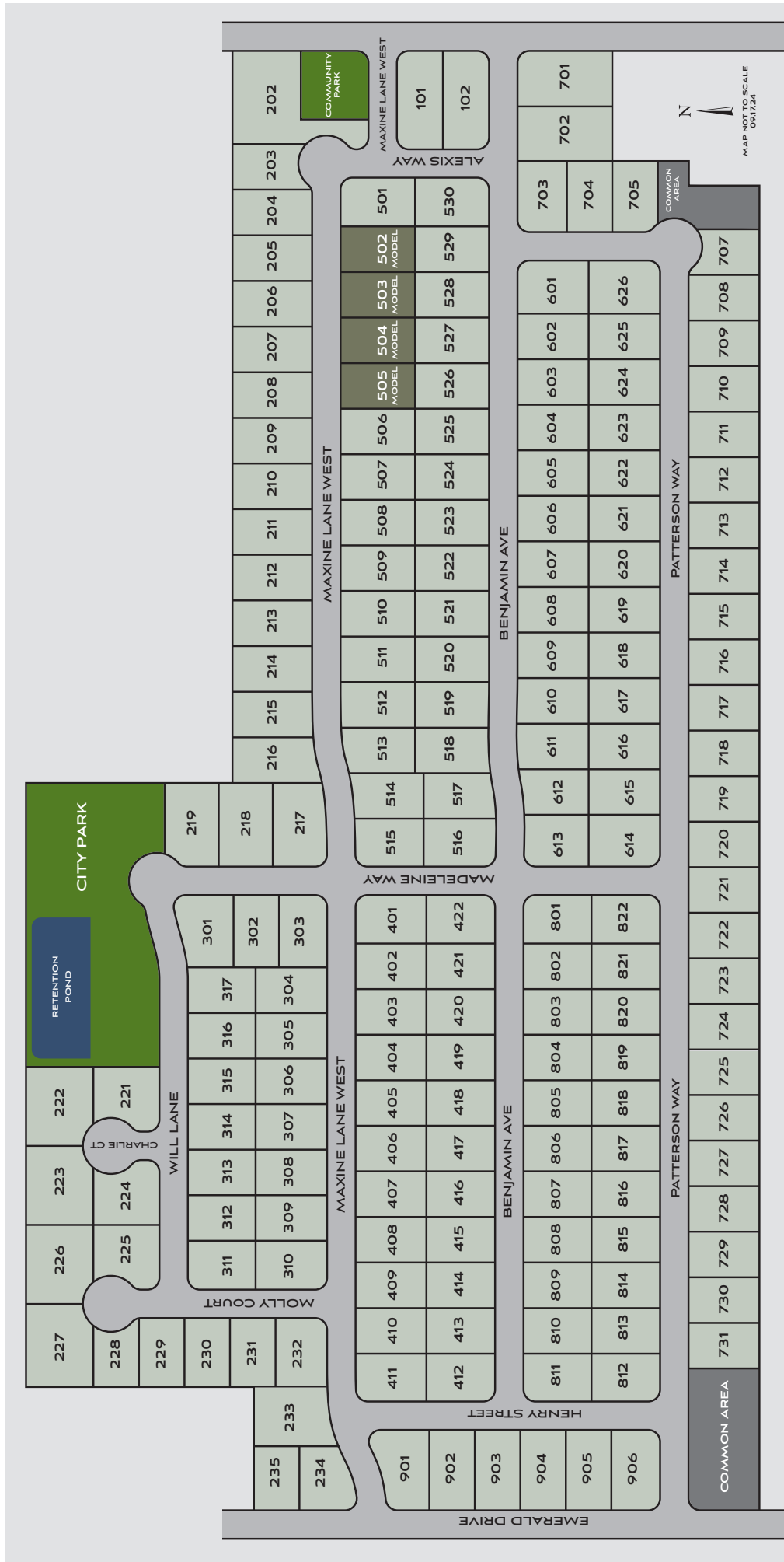
PRELIMINARY
Renderings are artist conception.

Prices, plans and terms are subject to change without prior notice. Square footage is approximate and will vary from final construction. Any floorplans, elevations and photos are artist conceptions only and are not intended to show specific detailing that may or may not be available. © Bates Homes All Rights Reserved. 11.19.24





BATES HOMES PATTERSON FARMS



Plot map not to scale. Any floorplans, elevations and photos are artist conceptions only and are not intended to show specific detailing that may or may not be available. © Bates Homes All Rights Reserved.





CREATING PLACES YOU WILL LOVE

At the core it seems simple: curate and build homes for comfort and livability.

Behind the scenes it is much more.

An interconnected network of intelligent, creative minds are hard at work refining distinct architectural aesthetics, leading the best in modern design, and planning unparalleled neighborhoods.

The result: an inspired home that represents time-honored craftsmanship, attention to detail, and contemporary style, in a thriving locale.



GOOD TOGETHER

As a family-owned company, we offer an experiential home buying environment. With an elevated focus on the homebuyer, our team of specially qualified professionals work in step with you from your first visit, in-person or virtually, to presenting you the keys, and everything in-between and beyond.

TRANSCENDING TRENDS

Our lifestyle homes offer enriched living through high-quality materials, luxe-inspired finishes, and flexible architectural solutions for the way we really live. Think an organized approach to abundant natural light, ample storage, and boundless room possibilities. This all equates to the Bates Homes' signature style and a home that is undeniably yours.



THE LEGACY

We have been doing this for decades and we love what we do. Our family builds homes that challenge the norm with livable designs. We bring a passion and perspective that no one else can, providing direction on every design element. It is personal to us and that translates to what is intensely important and personal to you - an innovative, luxurious, high-quality home that you love.



— BATES HOMES —
PATTERSON FARMS

208.297.1333 | pattersonfarms@bateshomes.com

BATESHOMES.COM