



— BATES HOMES —  
RIDGEWATER®

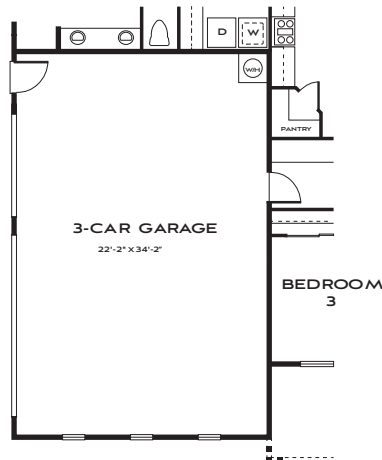
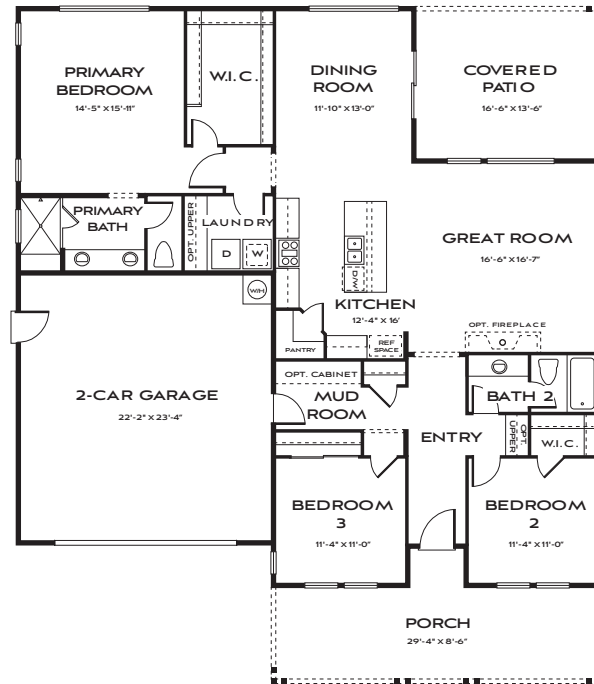


# Plan 1

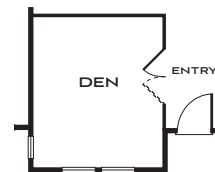
1,813 square feet | Single Story

Three Bedrooms | Two Baths | Two Car Garage

Options: Den | Three Car Garage



**OPTIONAL  
3-CAR GARAGE**



**OPTIONAL DEN  
AT BEDROOM 3**





**Mountain Rustic**  
(featuring 3 car garage option)



**Farmhouse**



**Modern**

PRELIMINARY  
Renderings are artist conception.

Prices, plans and terms are subject to change without prior notice. Square footage is approximate and will vary from final construction. Any floorplans, elevations and photos are artist conceptions only and are not intended to show specific detailing that may or may not be available. © Bates Homes All Rights Reserved. 11.19.24

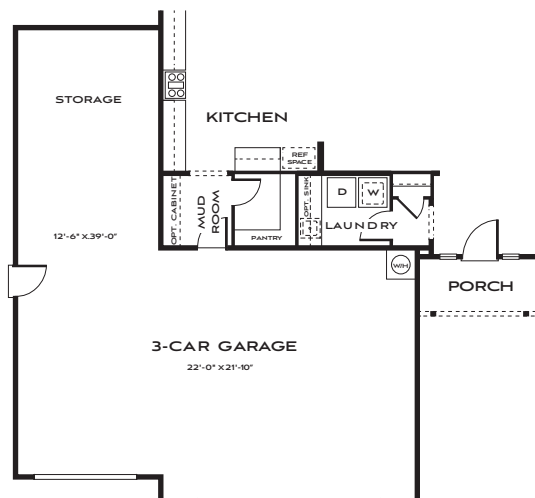
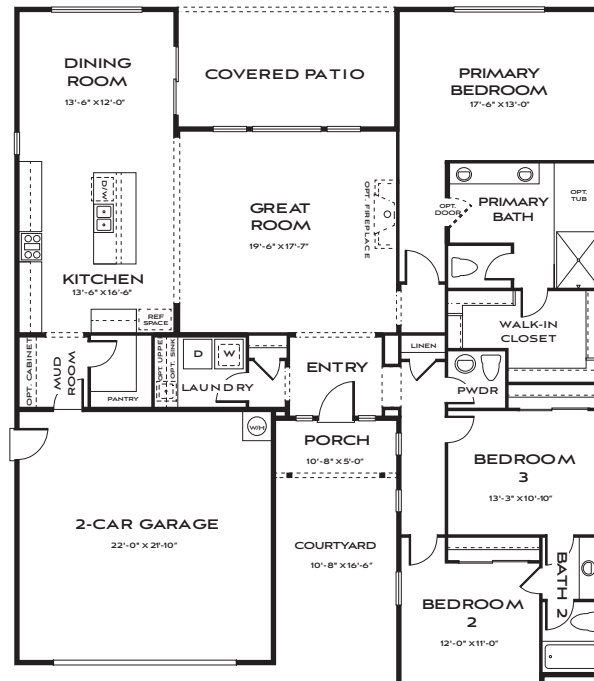


# Plan 2

2,105 square feet | Single Story

Three Bedrooms | Two and a Half Baths | Two Car Garage

Options: Three Car Garage plus Storage | Tub at Owners Bath



**OPTIONAL  
3-CAR GARAGE**





**Farmhouse**  
(featuring 3 car garage option)



**Mountain Rustic**



**Modern**

PRELIMINARY  
Renderings are artist conception.

Prices, plans and terms are subject to change without prior notice. Square footage is approximate and will vary from final construction. Any floorplans, elevations and photos are artist conceptions only and are not intended to show specific detailing that may or may not be available. © Bates Homes All Rights Reserved. 11.19.24

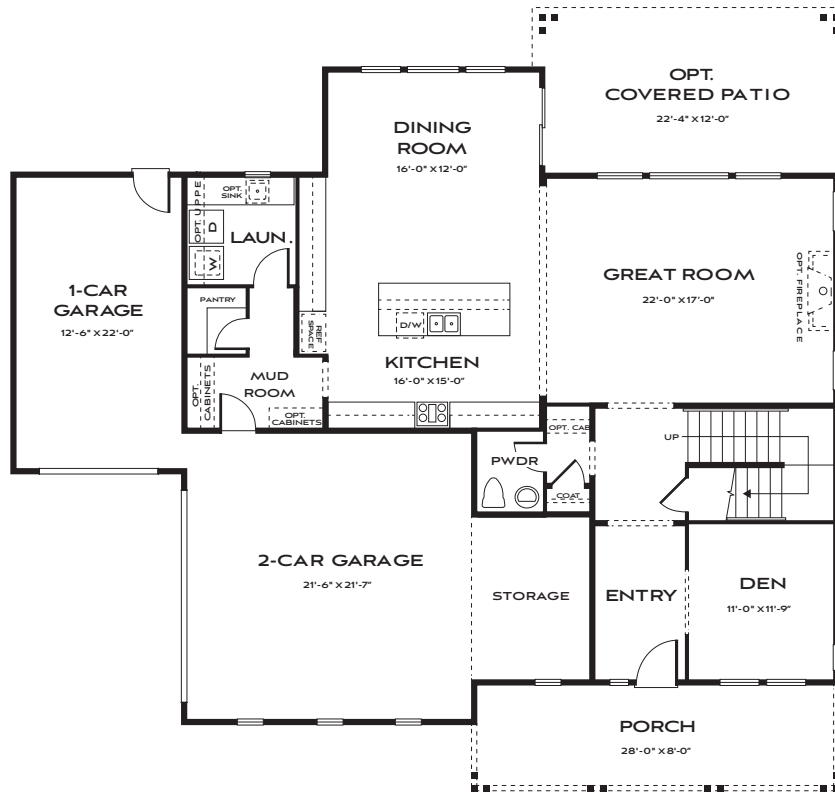


# Plan 3

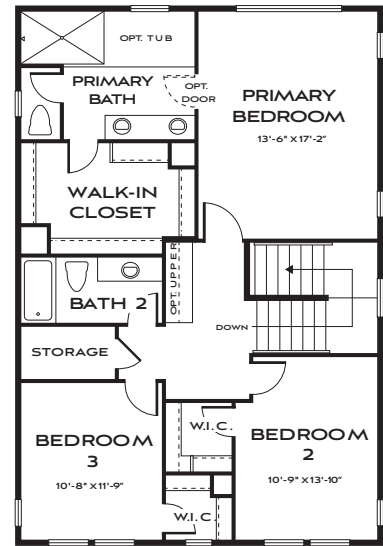
2,607 - 2,990 square feet | Two Story

Three Bedrooms | Den | Two and a Half Baths | Three Car Garage

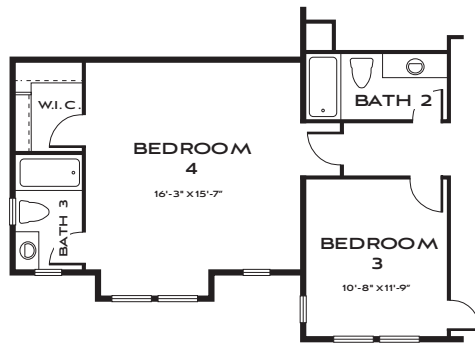
Options: Bedroom 4/Bath 3 | Bonus Room | Covered Patio | Tub at Owners Bath



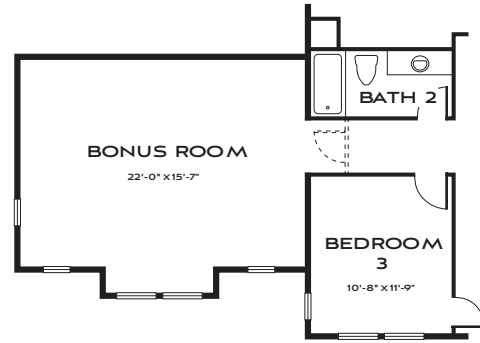
LOWER LEVEL



UPPER LEVEL



OPTIONAL BEDROOM 4  
(ADDS 383 SQUARE FEET)



OPTIONAL BONUS ROOM  
(ADDS 383 SQUARE FEET)





Mountain Rustic



Farmhouse



Modern  
(featuring bonus room option)

PRELIMINARY  
Renderings are artist conception.

Prices, plans and terms are subject to change without prior notice. Square footage is approximate and will vary from final construction. Any floorplans, elevations and photos are artist conceptions only and are not intended to show specific detailing that may or may not be available. © Bates Homes All Rights Reserved. 11.19.24

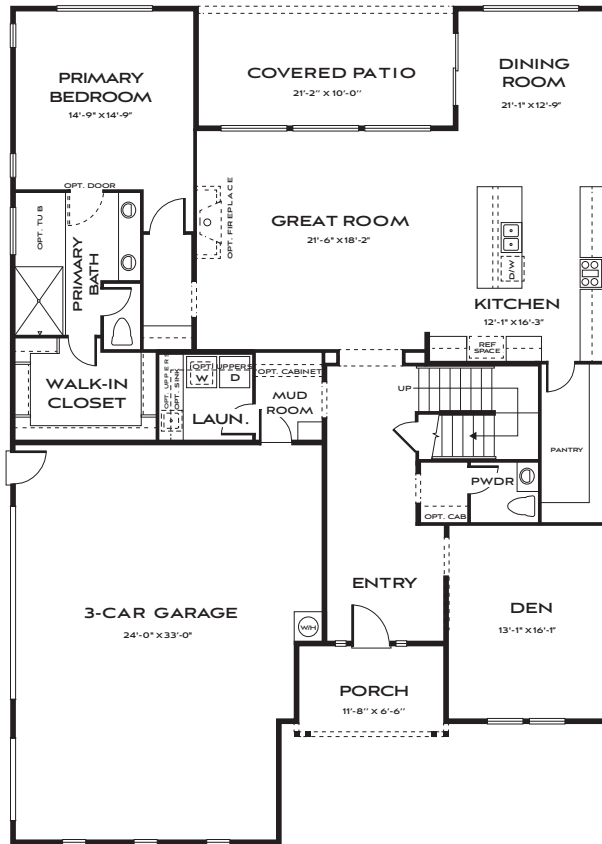


# Plan 4

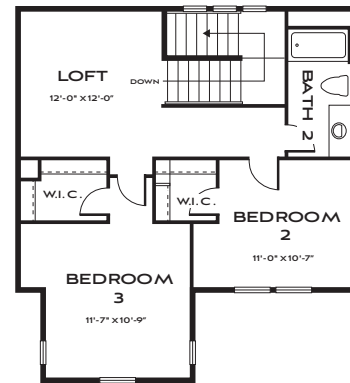
2,815 - 3,329 square feet | Two Story

Three Bedrooms | Den | Loft | Two and a Half Baths | Three Car Garage

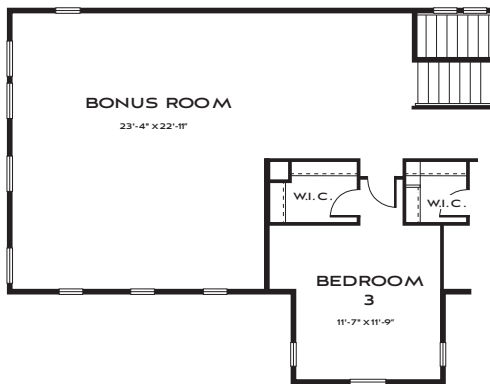
Options: Bonus Room | Bedroom 4 / Bath 3 Suite and Expanded Loft | Junior Suite | Tub at Owners Bath



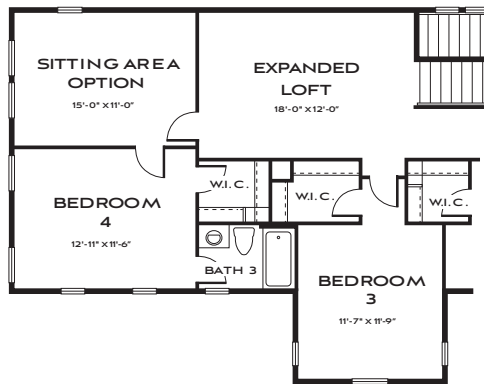
LOWER LEVEL



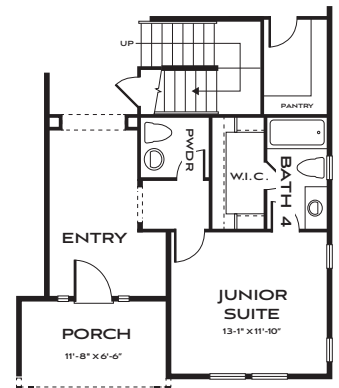
UPPER LEVEL



OPTIONAL BONUS ROOM  
(ADDS 514 SQUARE FEET)



OPT. BEDROOM 4, BATH 3,  
SUITE AND EXPANDED LOFT  
(ADDS 514 SQUARE FEET)



OPTIONAL  
JUNIOR SUITE







**Modern**  
(featuring bonus room option)



**Farmhouse**



**Mountain Rustic**

PRELIMINARY  
Renderings are artist conception.

Prices, plans and terms are subject to change without prior notice. Square footage is approximate and will vary from final construction. Any floorplans, elevations and photos are artist conceptions only and are not intended to show specific detailing that may or may not be available. © Bates Homes All Rights Reserved. 11.19.24



# CREATING PLACES YOU WILL LOVE

At the core it seems simple: curate and build homes for comfort and livability.

Behind the scenes it is much more.

An interconnected network of intelligent, creative minds are hard at work refining distinct architectural aesthetics, leading the best in modern design, and planning unparalleled neighborhoods.

The result: an inspired home that represents time-honored craftsmanship, attention to detail, and contemporary style, in a thriving locale.



## **GOOD TOGETHER**

As a family-owned company, we offer an experiential home buying environment. With an elevated focus on the homebuyer, our team of specially qualified professionals work in step with you from your first visit, in-person or virtually, to presenting you the keys, and everything in-between and beyond.

## **TRANSCENDING TRENDS**

Our lifestyle homes offer enriched living through high-quality materials, luxe-inspired finishes, and flexible architectural solutions for the way we really live. Think an organized approach to abundant natural light, ample storage, and boundless room possibilities. This all equates to the Bates Homes' signature style and a home that is undeniably yours.



## **THE LEGACY**

We have been doing this for over seven decades and we love what we do. Our family builds homes that challenge the norm with livable designs. We bring a passion and perspective that no one else can, providing direction on every design element. It is personal to us and that translates to what is intensely important and personal to you - an innovative, luxurious, high-quality home that you love.

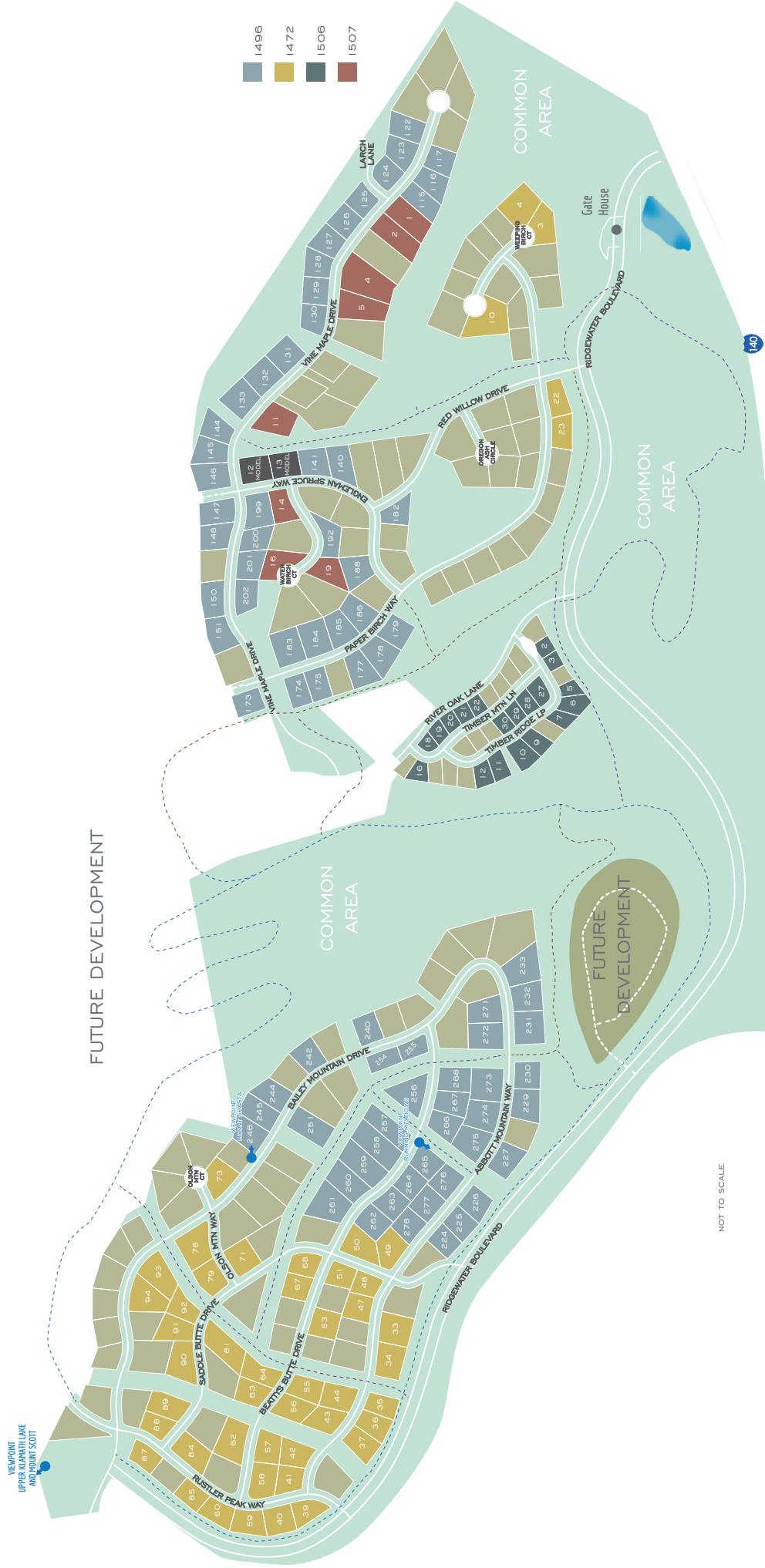


— BATES HOMES —  
RIDGEWATER

541.706.9000 | [ridgewater@bateshomes.com](mailto:ridgewater@bateshomes.com)

**BATESHOMES.COM**

— BATES HOMES —  
RIDGEWATER®



----- HARD SURFACE TRAILS  
----- SOFT SURFACE TRAILS

RIDGEWATER KLAMATH COUNTY RECORDED MAP

Plot map not to scale. Any floorplans, elevations and photos are artist conceptions only and are not intended to show specific detailing that may or may not be available. © Bates Homes All Rights Reserved.

