



— BATES HOMES —
RIDGEWATER®

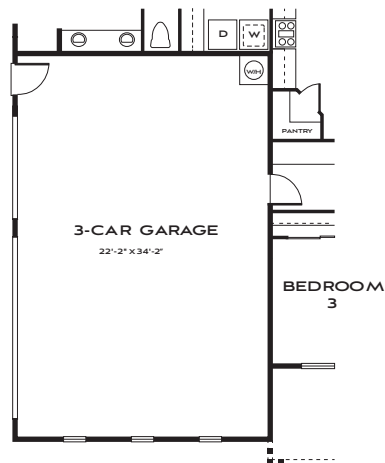
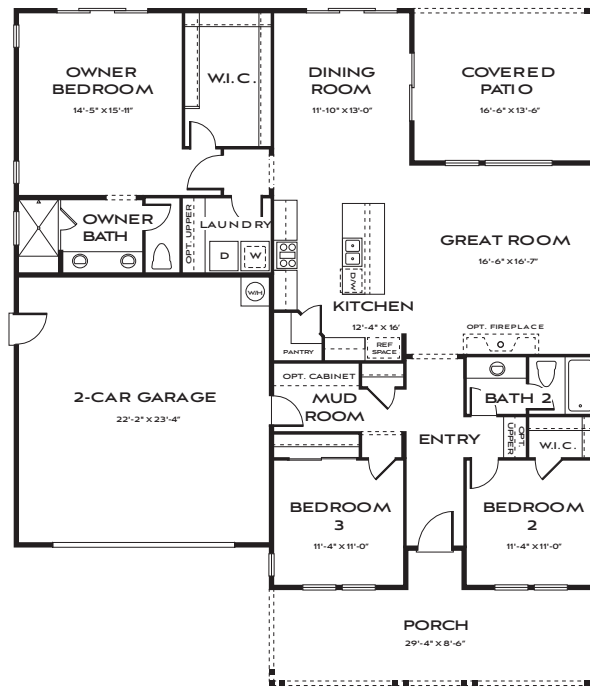


Plan 1

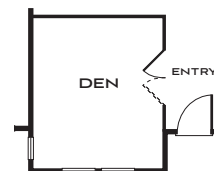
1,813 square feet | Single Story

Three Bedrooms | Two Baths | Two Car Garage

Options: Den | Three Car Garage



OPTIONAL 3-CAR GARAGE



**OPTIONAL DEN
AT BEDROOM 3**

PRELIMINARY Prices, plans and terms are subject to change without prior notice. Square footage is approximate and will vary from final construction. Any floorplans, elevations and photos are artist conceptions only and are not intended to show specific detailing that may or may not be available. © Bates Homes All Rights Reserved. 07.22.24





Farmhouse
(featuring 3 car garage option)



Mountain Rustic



Modern

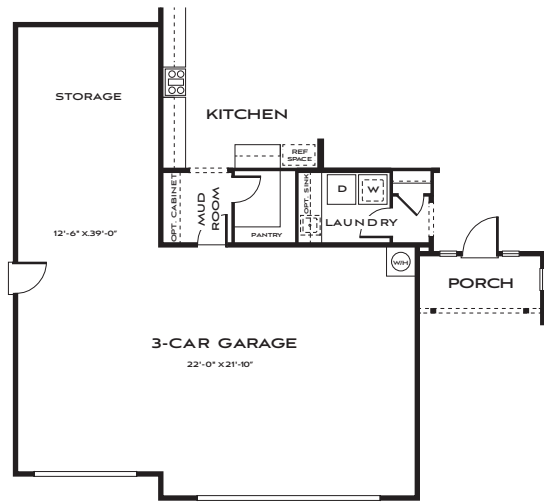
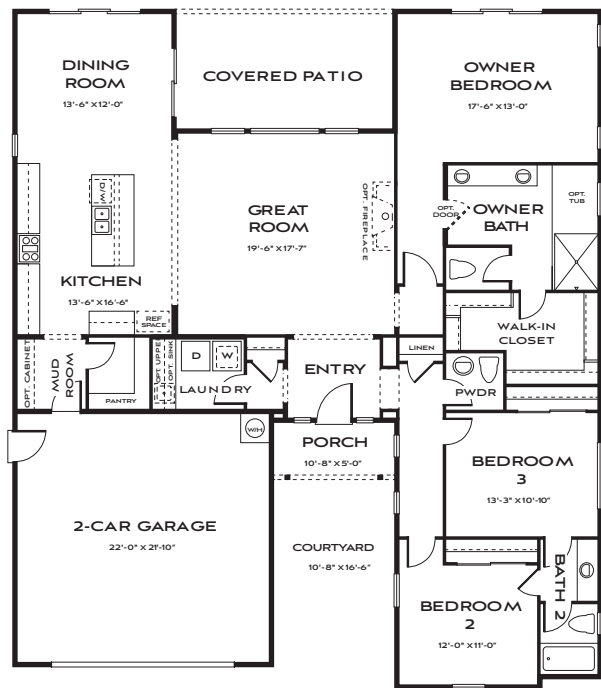
PRELIMINARY
Renderings are artist conception.

Prices, plans and terms are subject to change without prior notice. Square footage is approximate and will vary from final construction. Any floorplans, elevations and photos are artist conceptions only and are not intended to show specific detailing that may or may not be available. © Bates Homes All Rights Reserved. 07.22.24



Plan 2

2,105 square feet | Single Story
Three Bedrooms | Two and a Half Baths | Two Car Garage
Options: Three Car Garage plus Storage | Tub at Owners Bath



OPTIONAL
3-CAR GARAGE



Farmhouse
(featuring 3 car garage option)



Mountain Rustic



Modern

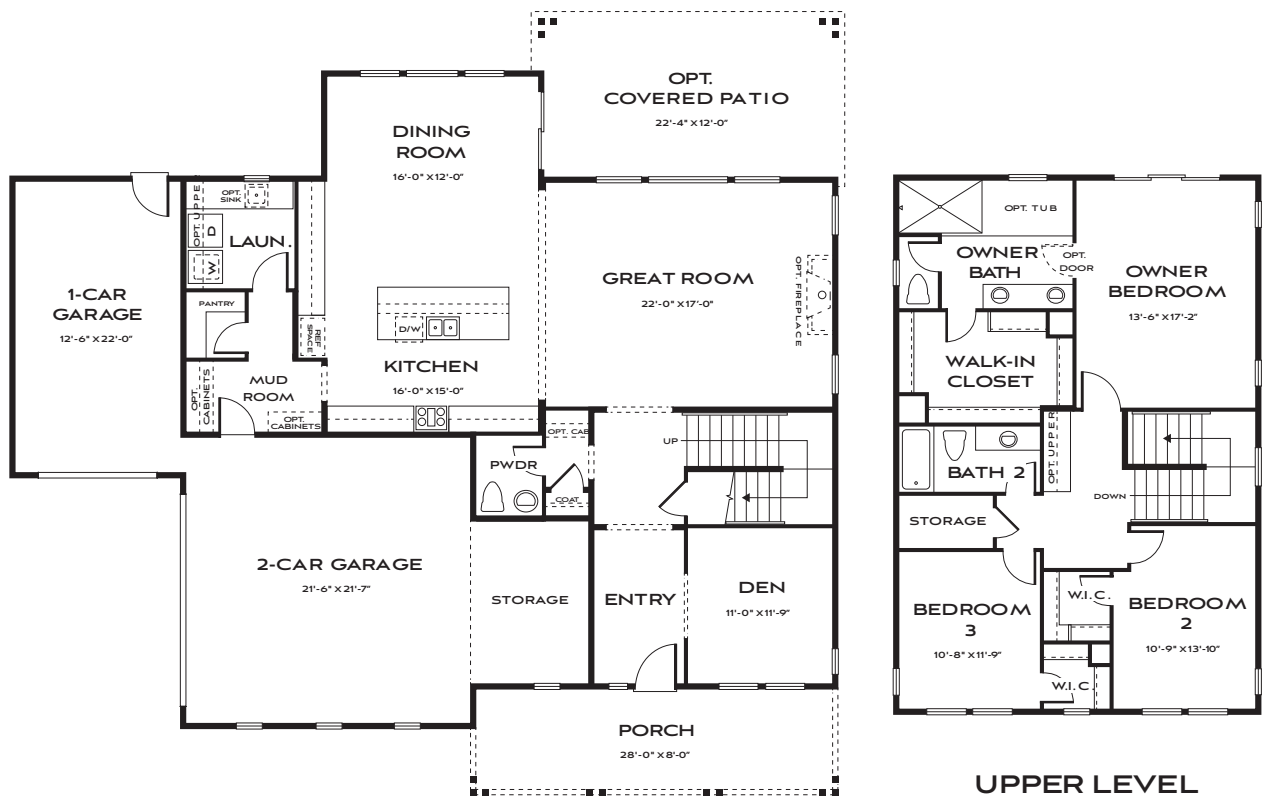
PRELIMINARY
Renderings are artist conception.

Prices, plans and terms are subject to change without prior notice. Square footage is approximate and will vary from final construction. Any floorplans, elevations and photos are artist conceptions only and are not intended to show specific detailing that may or may not be available. © Bates Homes All Rights Reserved. 07.22.24



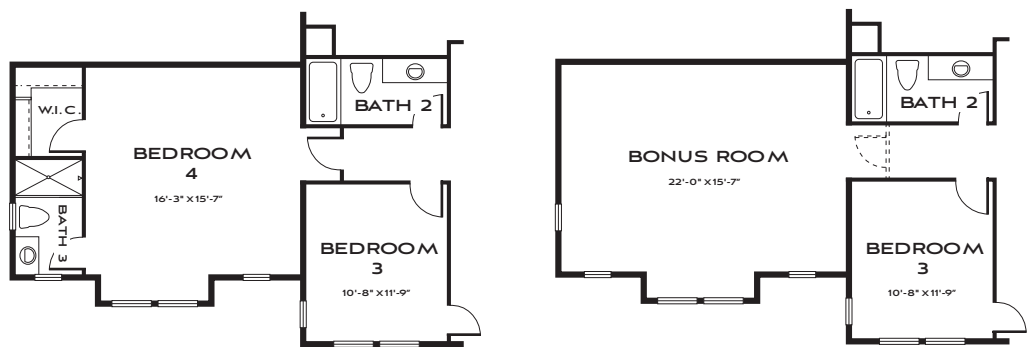
Plan 3

2,607 - 2,990 square feet | Two Story
Three Bedrooms | Den | Two and a Half Baths | Three Car Garage
Options: Bedroom 4/Bath 3 | Bonus Room | Covered Patio | Tub at Owners Bath



LOWER LEVEL

UPPER LEVEL





Farmhouse



Mountain Rustic



Modern
(featuring bonus room option)

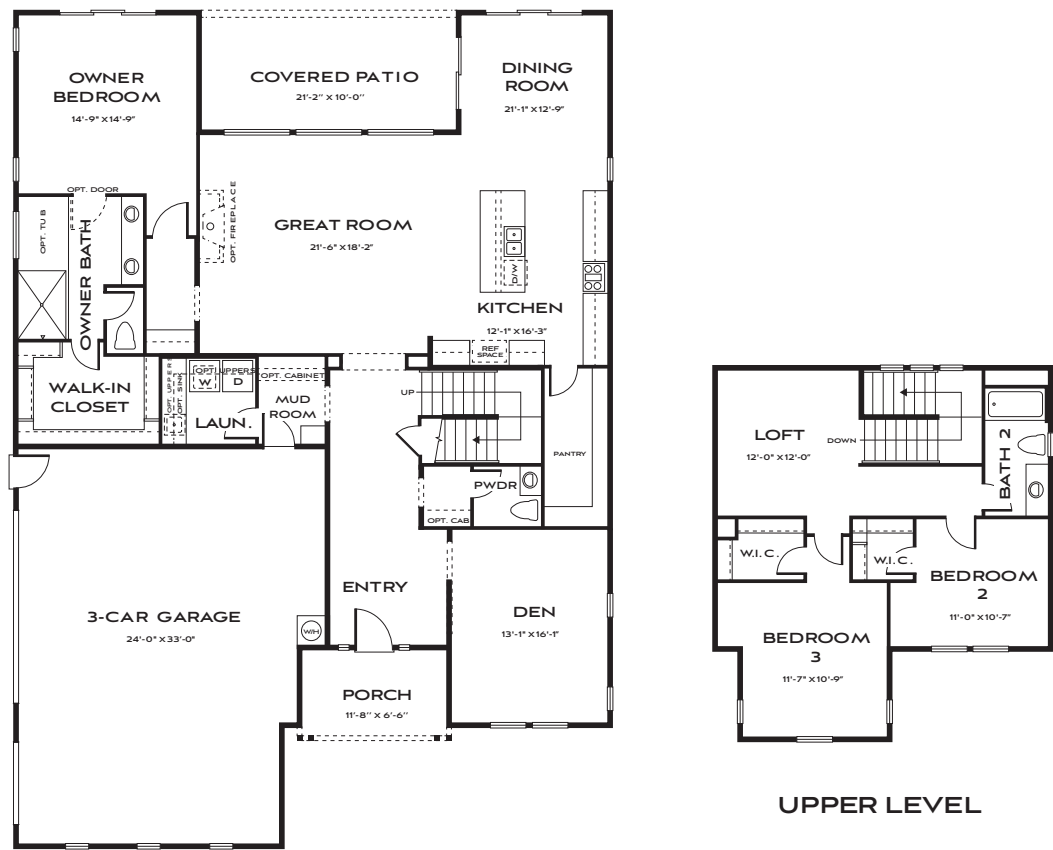
PRELIMINARY
Renderings are artist conception.

Prices, plans and terms are subject to change without prior notice. Square footage is approximate and will vary from final construction. Any floorplans, elevations and photos are artist conceptions only and are not intended to show specific detailing that may or may not be available. © Bates Homes All Rights Reserved. 07.22.24

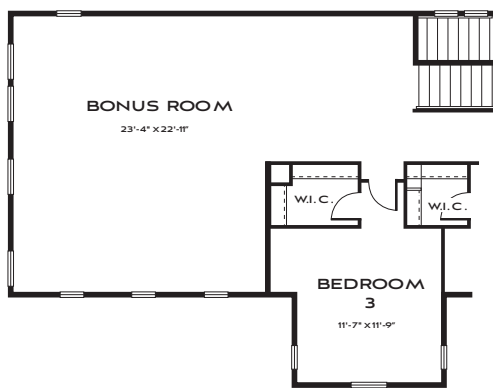


Plan 4

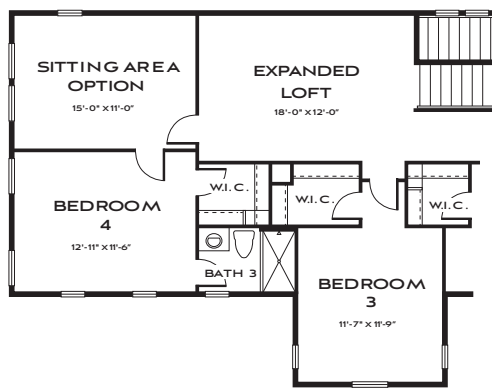
2,815 - 3,329 square feet | Two Story
Three Bedrooms | Den | Loft | Two and a Half Baths | Three Car Garage
Options: Bonus Room | Bedroom 4 / Bath 3 Suite and Expanded Loft | Junior Suite | Tub at Owners Bath



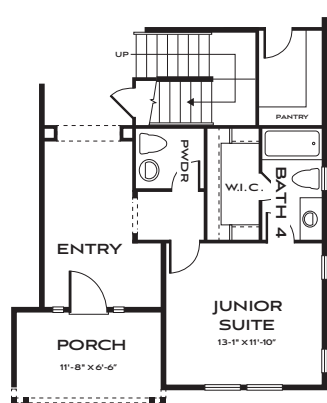
LOWER LEVEL



OPTIONAL BONUS ROOM
(ADDS 514 SQUARE FEET)



OPT. BEDROOM 4, BATH 3,
SUITE AND EXPANDED LOFT
(ADDS 514 SQUARE FEET)



OPTIONAL
JUNIOR SUITE



Farmhouse



Mountain Rustic
(featuring bonus room option)



Modern

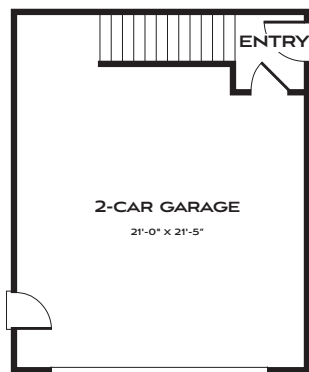
PRELIMINARY
Renderings are artist conception.

Prices, plans and terms are subject to change without prior notice. Square footage is approximate and will vary from final construction. Any floorplans, elevations and photos are artist conceptions only and are not intended to show specific detailing that may or may not be available. © Bates Homes All Rights Reserved. 07.22.24

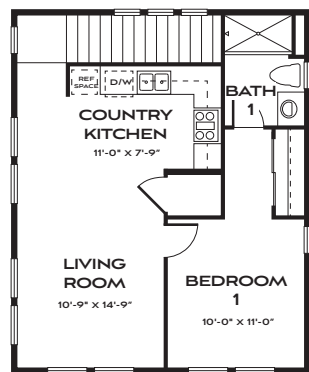


Carriage Home

Carriage Home: 631 square feet
Garage: 500 square feet



LOWER LEVEL GARAGE



UPPER LEVEL
CARRIAGE HOME



Farmhouse



Mountain Rustic

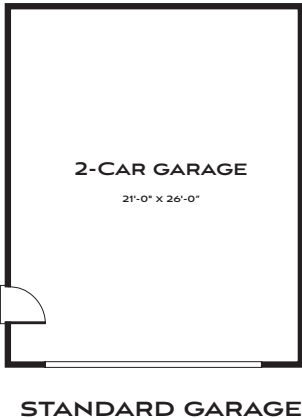


Modern



Garage Addition

594 square feet



Farmhouse



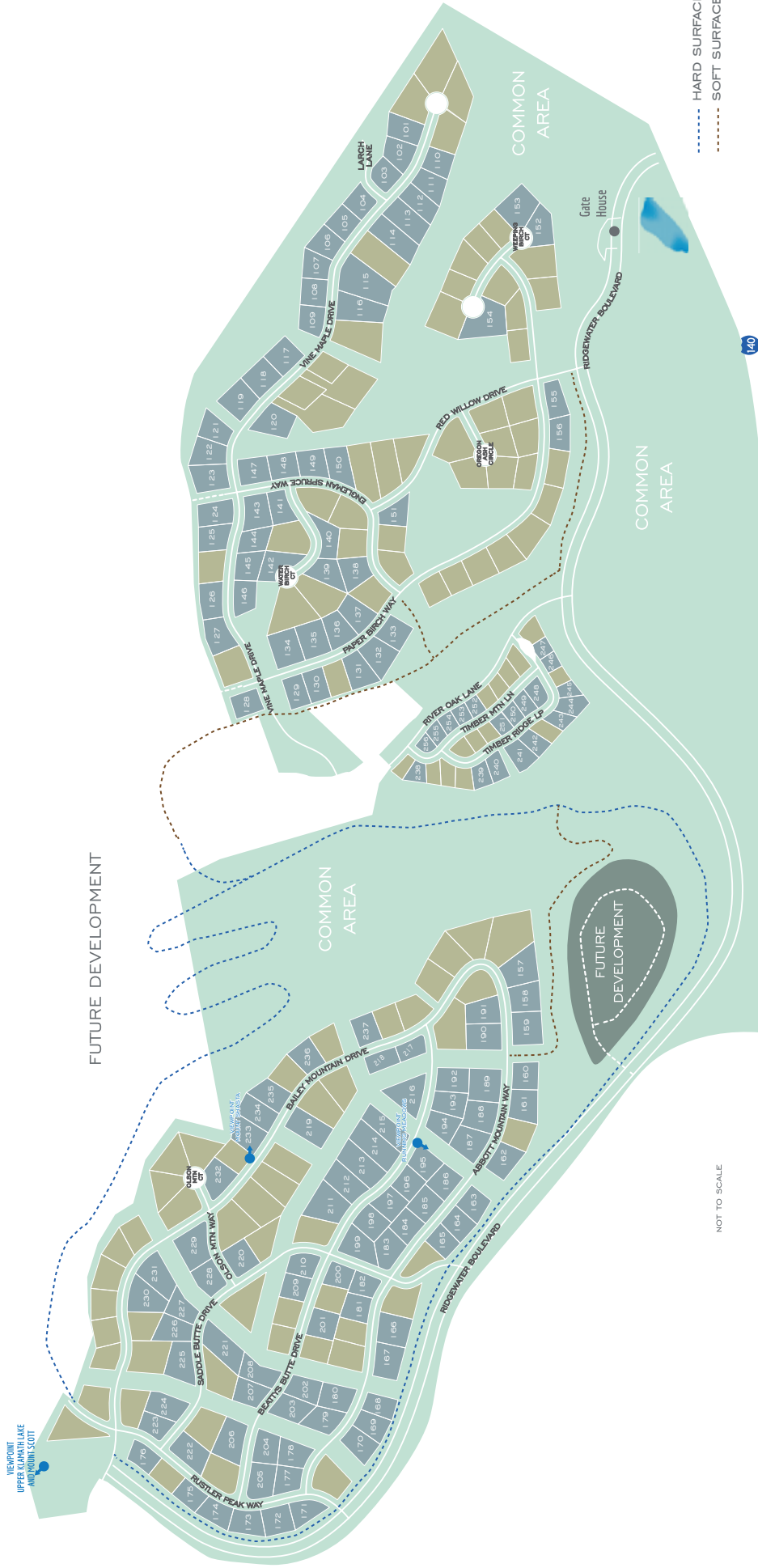
Mountain Rustic



Modern



— BATES HOMES —
RIDGEWATER®



NUMBERING FOR MARKETING PURPOSES

CREATING PLACES YOU WILL LOVE

At the core it seems simple: curate and build homes for comfort and livability.

Behind the scenes it is much more.

An interconnected network of intelligent, creative minds are hard at work refining distinct architectural aesthetics, leading the best in modern design, and planning unparalleled neighborhoods.

The result: an inspired home that represents time-honored craftsmanship, attention to detail, and contemporary style, in a thriving locale.



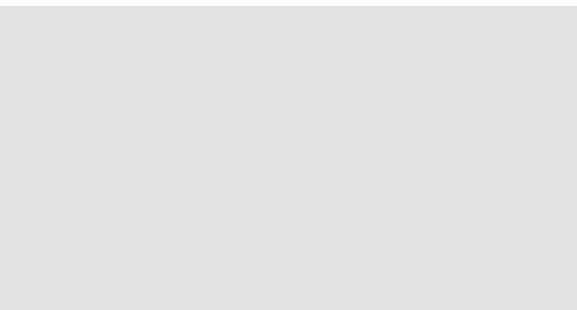
GOOD TOGETHER

As a family-owned company, we offer an experiential home buying environment. With an elevated focus on the homebuyer, our team of specially qualified professionals work in step with you from your first visit, in-person or virtually, to presenting you the keys, and everything in-between and beyond.

TRANSCENDING TRENDS

Our lifestyle homes offer enriched living through high-quality materials, luxe-inspired finishes, and flexible architectural solutions for the way we really live. Think an organized approach to abundant natural light, ample storage, and boundless room possibilities.

This all equates to the Bates Homes' signature style and a home that is undeniably yours.



THE LEGACY

We have been doing this for over seven decades and we love what we do. Our family builds homes that challenge the norm with livable designs. We bring a passion and perspective that no one else can, providing direction on every design element. It is personal to us and that translates to what is intensely important and personal to you - an innovative, luxurious, high-quality home that you love.



— BATES HOMES —
RIDGEWATER

541.706.9000 | ridgewater@bateshomes.com

BATESHOMES.COM